

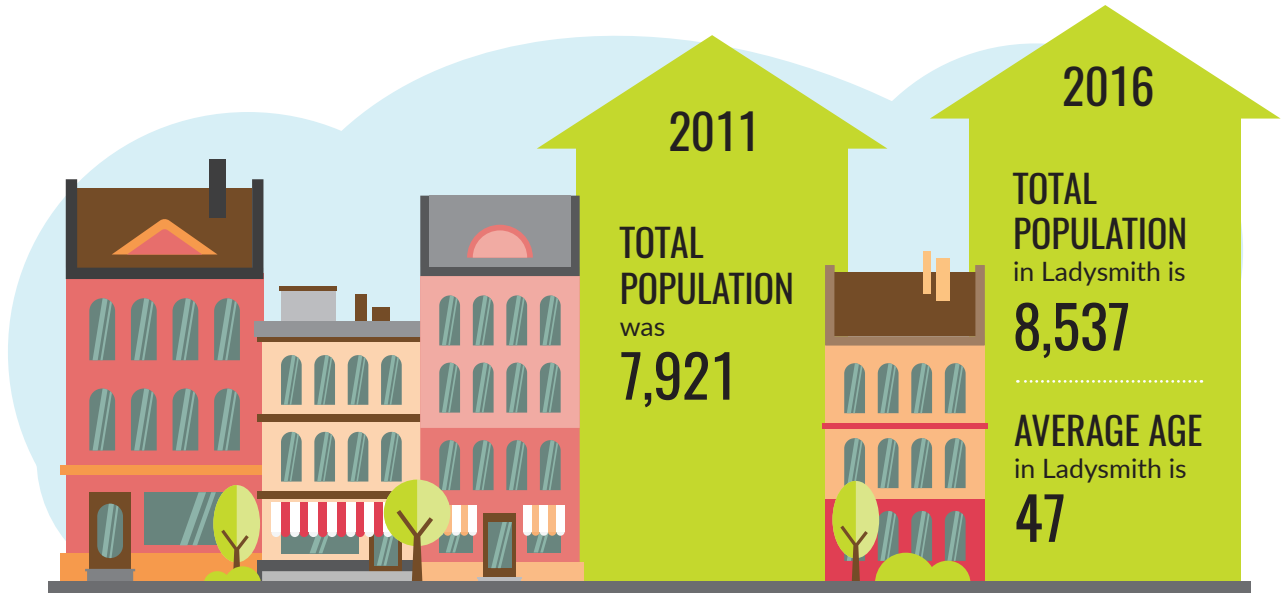
# TOWN OF LADYSMITH

A photograph of four young children playing on a sandy beach. In the foreground, a child is crouching and digging in the sand with a small shovel. To their right, another child is also crouching, focused on their play. In the background, two more children are visible; one is standing and holding a large shovel, while the other is crouching nearby. The beach is wide and sandy, with a calm lake or bay in the distance. The background features a line of trees and some buildings on a hillside under a clear sky. The entire image has a color gradient overlay, transitioning from a light blue at the top to a dark blue at the bottom.

**2017 COMMUNITY PROFILE**  
*Working together to build our future!*

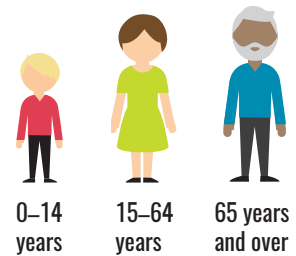
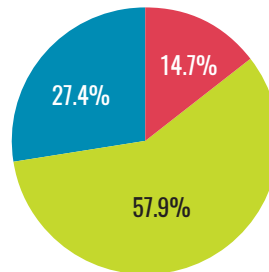
# DEMOGRAPHICS

## Population & Age



From 2011 to 2016 the population in Ladysmith grew by **7.8%**

### Age Distribution



## Households

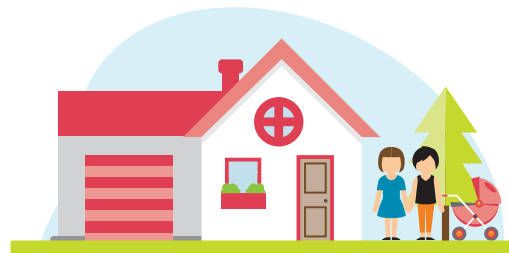
Ladysmith has

**2,540** SINGLE DETACHED HOUSES,  
**945** ATTACHED DWELLINGS, and  
**225** MOBILE DWELLINGS



Ladysmith has  
an average of

**2.3 people**  
PER HOUSEHOLD



## Location

Ladysmith is  
**CONVENIENTLY  
LOCATED**

**88 km**  
to Victoria and  
**23 km**  
to Nanaimo



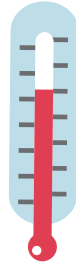
(Source: Statistics Canada)

# QUALITY OF LIFE

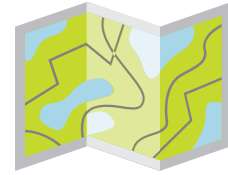
## *Weather & Land*



Ladysmith enjoys  
**295 days** of  
**BRIGHT SUNSHINE**  
per year and has  
**65 days** of **RAIN**



Average  
**TEMPERATURE**  
in January is  
**3.5 °C**  
and in July is  
**18.1 °C**



Ladysmith's  
**LAND AREA** is  
**1,200**  
**hectares**



Ladysmith enjoys  
**26 kilometres** of **TRAILS** and  
**110 hectares** (272 acres) of **PARKLAND**

## Education

Ladysmith has small friendly schools.



### Over 60%

of Ladysmith's population aged 25-64 years has a **POST-SECONDARY DIPLOMA, DEGREE OR CERTIFICATE**

SCHOOL	STUDENTS*	GRADES
Ladysmith Primary School	242	(K-3)
Ladysmith Intermediate School	295	(4-7)
Ladysmith Secondary School	565	(8-12)
École North Oyster	303	(K-7) (offers French Immersion)

\*Sept 2016 - June 2017

## Housing Prices

2016 Average Sale Price for Residential Property



## Income

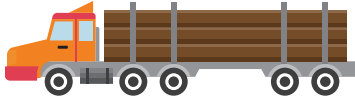


MEDIAN FAMILY INCOME is  
**\$63,544**

(Sources: Statistics Canada, Environment Canada, VIREB and The Canadian Real Estate Association)

# A VIBRANT ECONOMY

## Business & Housing



Ladysmith has  
**60 hectares**  
of actively used  
**INDUSTRIAL LAND**

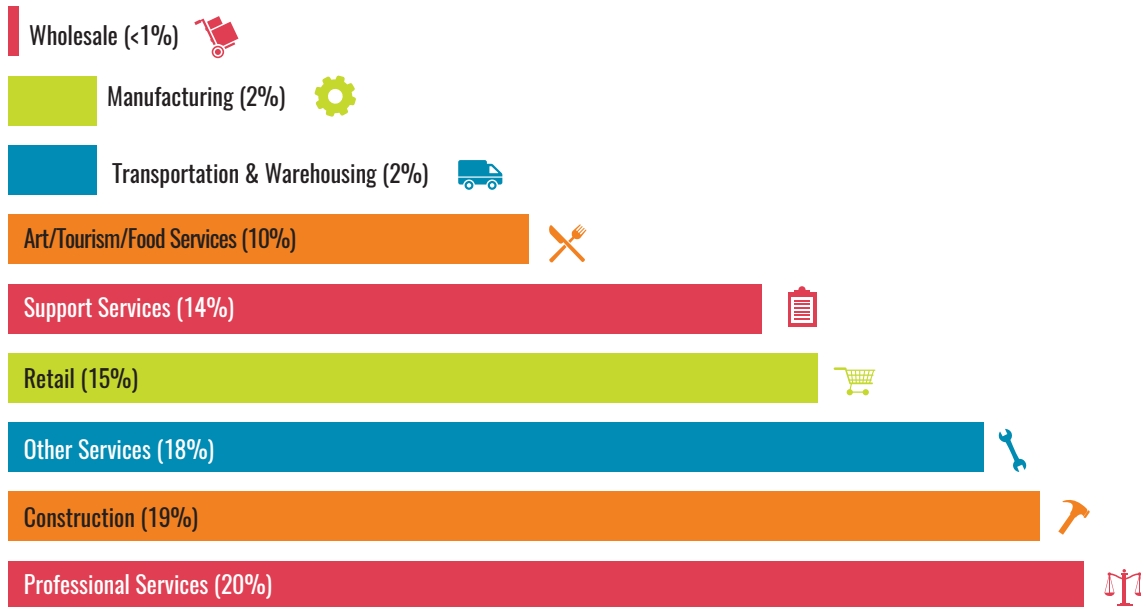


In 2016 Ladysmith had  
**483 active**  
**BUSINESS LICENCES**



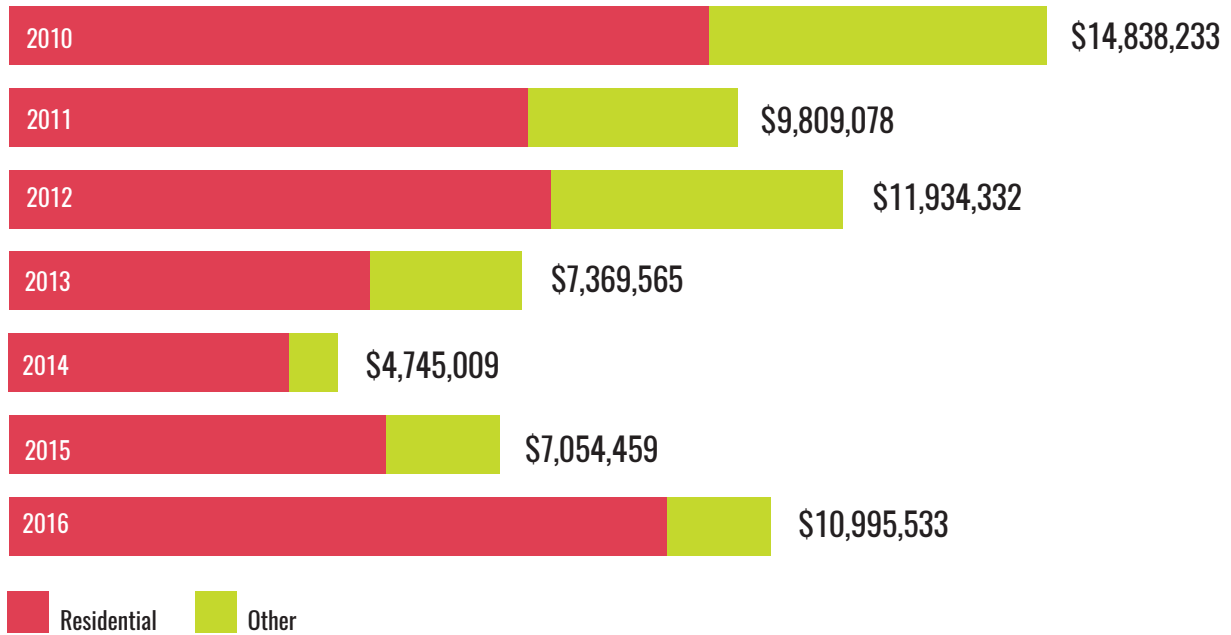
In 2010,  
**79.5%**  
of Ladysmith households  
**OWNED THEIR HOME**

## Ladysmith Business Sectors 2016

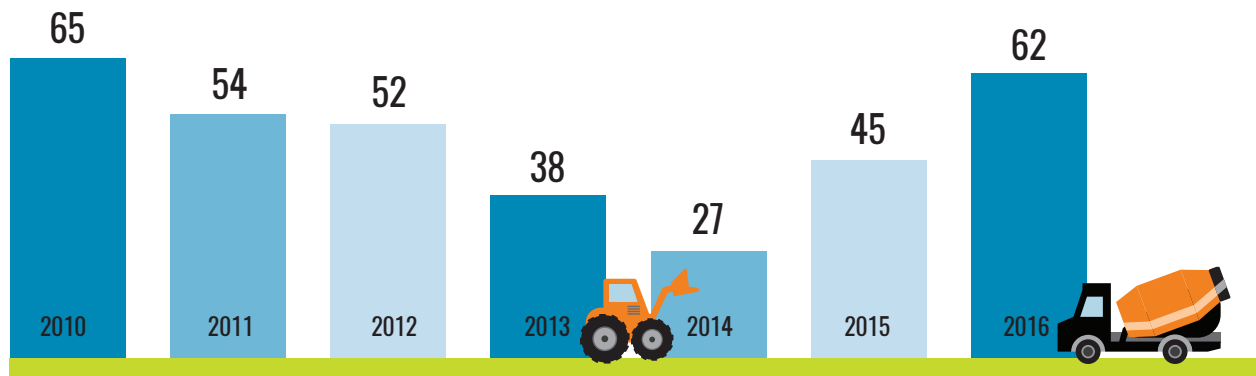


(Information about each business category can be found at [statcan.gc.ca](http://statcan.gc.ca))

## Building Permit Values 2010 – 2016



## Number of new dwelling units constructed in Ladysmith each year.



(Sources: Statistics Canada, Town of Ladysmith)





Town of Ladysmith  
Development Services Department  
132C Roberts Street P.O. Box 220,  
Ladysmith, British Columbia, V9G 1A2  
ladysmith.ca | (250) 245-6415



*This paper contains 100% post-consumer waste.*

**zero**

100%  
carbon  
neutral

by Hemlock Printers  
[www.hemlock.com/zero](http://www.hemlock.com/zero)