

# TOWN OF LADYSMITH

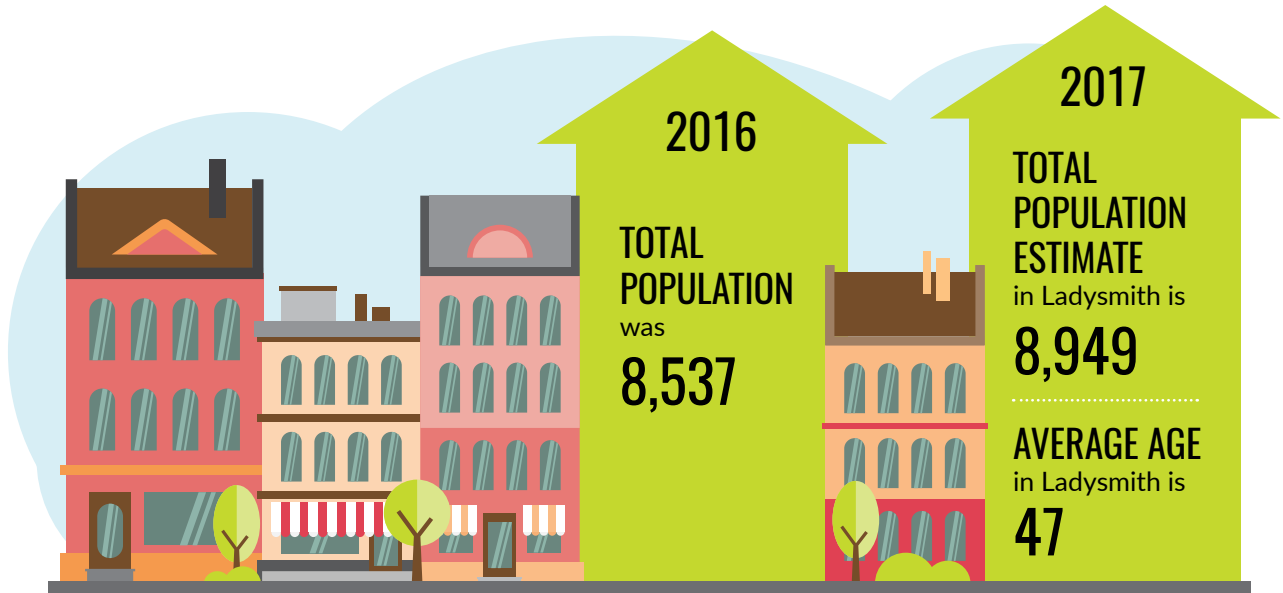


2018 COMMUNITY PROFILE

*Working together to build our future!*

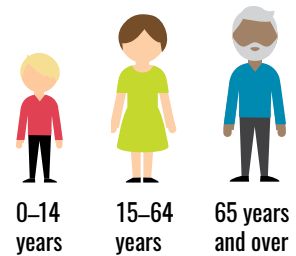
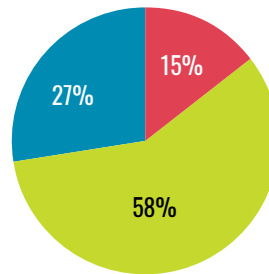
# DEMOGRAPHICS

## Population & Age



From 2011 to 2016  
the population in  
Ladysmith grew by **7.8%**

### Age Distribution



## Households

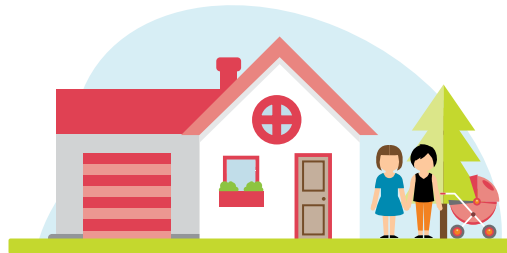
Ladysmith has

**2,540** SINGLE DETACHED HOUSES,  
**945** ATTACHED DWELLINGS, and  
**225** MOBILE DWELLINGS



Ladysmith has  
an average of

**2.3 people**  
PER HOUSEHOLD



## Location

Ladysmith is  
**CONVENIENTLY  
LOCATED**

**88 km**  
to Victoria and  
**23 km**  
to Nanaimo



# QUALITY OF LIFE

## *Weather & Land*

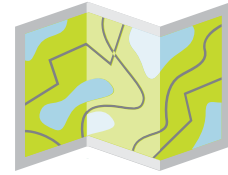


Ladysmith enjoys

**295 days** of  
**BRIGHT SUNSHINE**  
per year and has  
**65 days** of **RAIN**



Average  
**TEMPERATURE**  
in January is  
**3.5 °C**  
and in July is  
**18.1 °C**



Ladysmith's  
**LAND AREA** is  
**1,200**  
**hectares**



Ladysmith enjoys

**26 kilometres** of **TRAILS** and  
**110 hectares** (272 acres) of **PARKLAND**

## Education

Ladysmith has small friendly schools.



### Over 60%

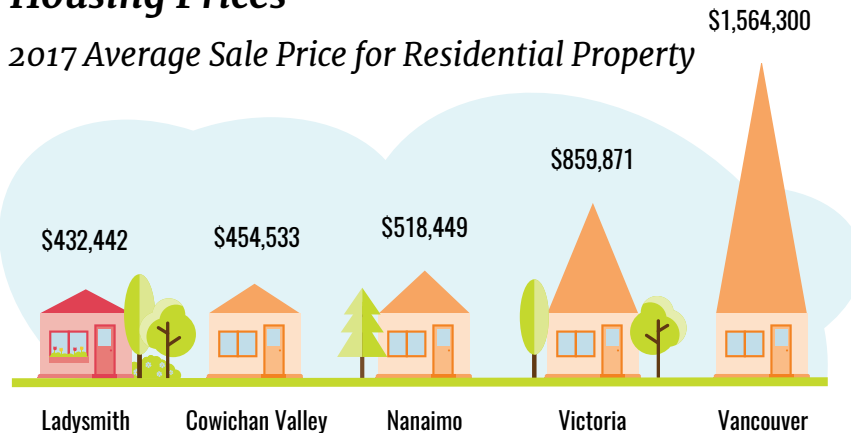
of Ladysmith's population aged 25-64 years has a **POST-SECONDARY DIPLOMA, DEGREE OR CERTIFICATE**

SCHOOL	STUDENTS*	GRADES
Ladysmith Primary School	254	(K-3)
Ladysmith Intermediate School	287	(4-7)
Ladysmith Secondary School	570	(8-12)
École North Oyster Elementary	331	(K-7) (offers French Immersion)

\*Sept 2017 - June 2018

## Housing Prices

2017 Average Sale Price for Residential Property



## Income

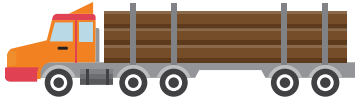


**MEDIAN HOUSEHOLD INCOME** is **\$67,674**

(Sources: Statistics Canada, Environment Canada, VIREB, VREB, REBGV, and School District 68)

# A VIBRANT ECONOMY

## Business & Housing



Ladysmith has  
**60 hectares**  
of actively used  
**INDUSTRIAL LAND**

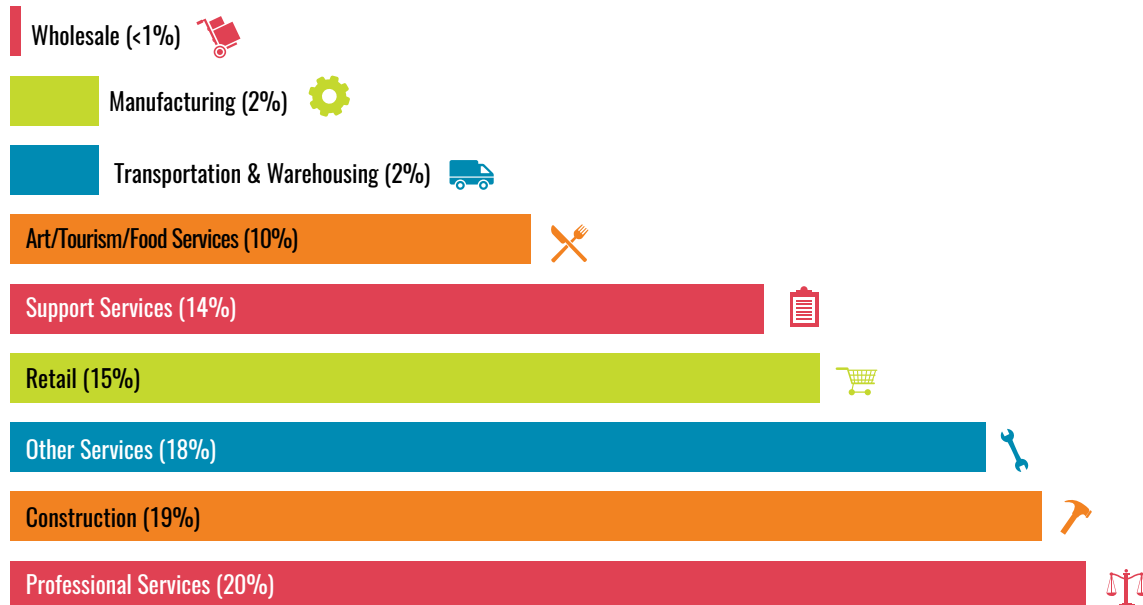


In 2017 Ladysmith had  
**488 active**  
**BUSINESS LICENCES**



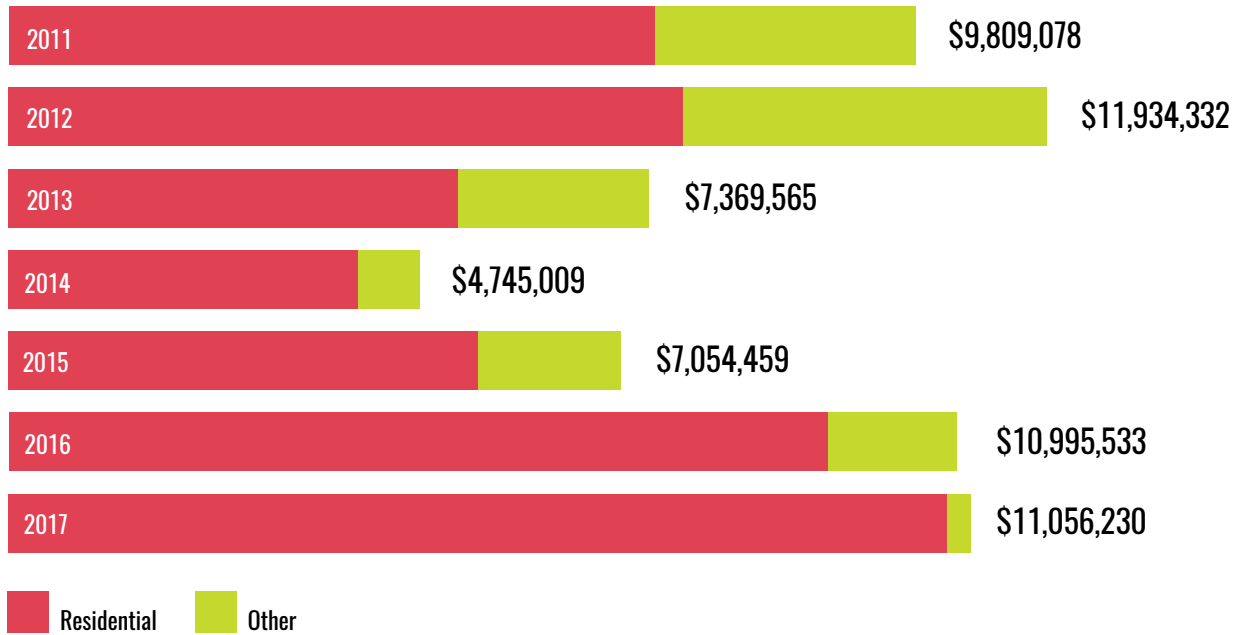
**80.5%**  
of Ladysmith households  
**OWN THEIR HOMES**

## Ladysmith Business Sectors 2016

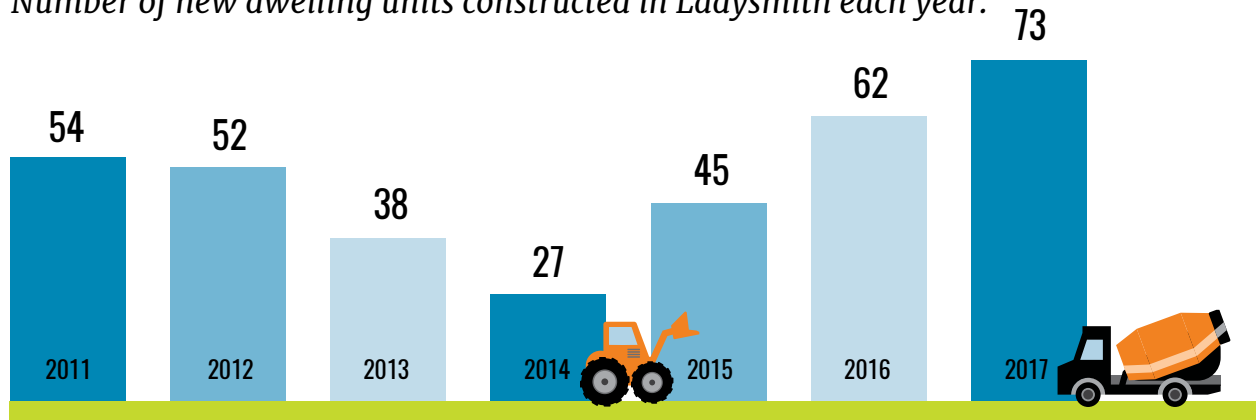


(Information about each business category can be found at [statcan.gc.ca](http://statcan.gc.ca))

### Building Permit Values 2011 – 2017



### Number of new dwelling units constructed in Ladysmith each year.



(Sources: Statistics Canada, Town of Ladysmith)





Town of Ladysmith  
Development Services Department  
132C Roberts Street P.O. Box 220,  
Ladysmith, British Columbia, V9G 1A2  
ladysmith.ca | (250) 245-6415



LADYSMITH

*This paper contains 100% post-consumer waste.*

**zero**

100%  
carbon  
neutral

by Hemlock Printers  
[www.hemlock.com/zero](http://www.hemlock.com/zero)