

TOWN OF LADYSMITH



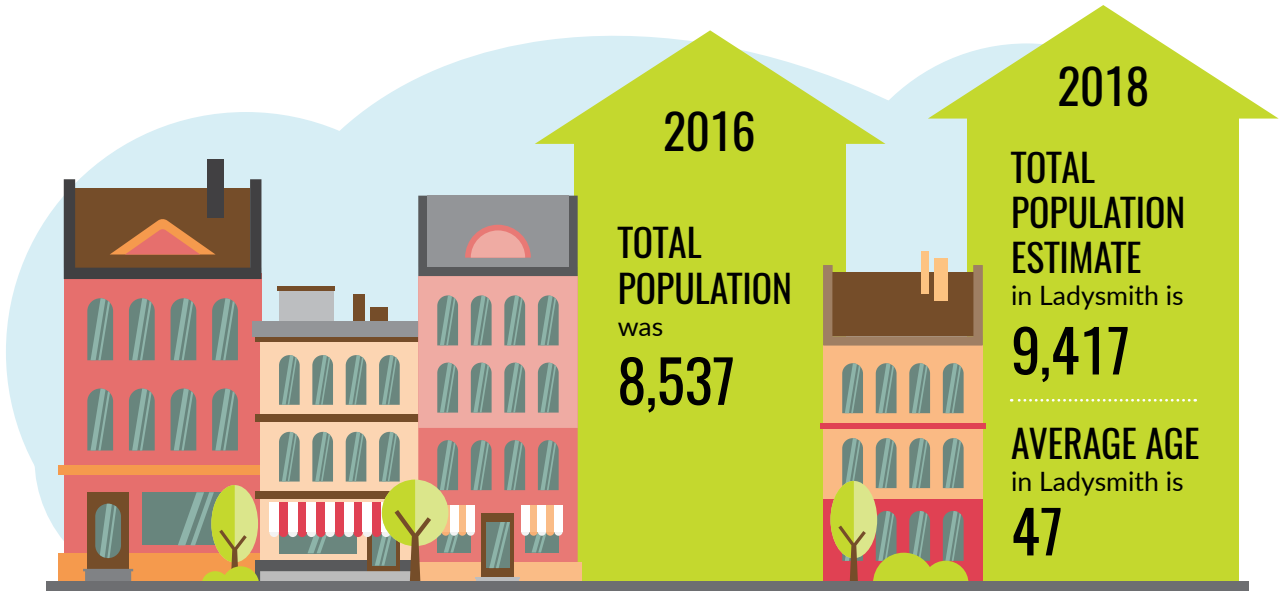
OPEN *for*
BUSINESS
2019 Award Finalist

COMMUNITY PROFILE

Working together to build our future!

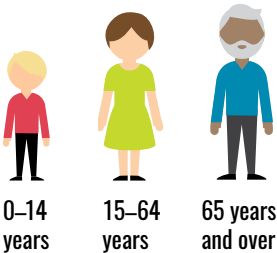
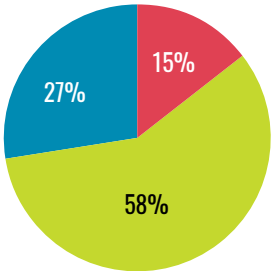
DEMOGRAPHICS

Population & Age



From 2011 to 2016
the population in
Ladysmith grew by **7.8%**

Age Distribution



Households

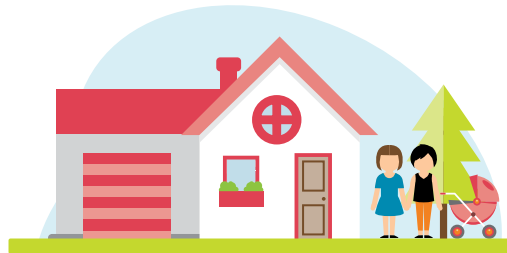
Ladysmith has

2,540 SINGLE DETACHED HOUSES,
945 ATTACHED DWELLINGS, and
225 MOBILE DWELLINGS



Ladysmith has
an average of

2.3 people
PER HOUSEHOLD



Location

Ladysmith is
**CONVENIENTLY
LOCATED**

88 km
to Victoria and
23 km
to Nanaimo

British
Columbia
CANADA

Nanaimo
Ladysmith
Vancouver

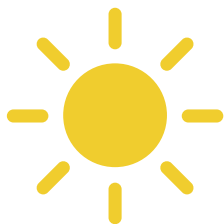
Victoria

Seattle

Washington
USA

QUALITY OF LIFE

Weather & Land

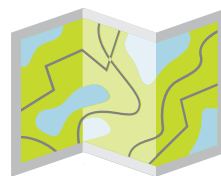


Ladysmith enjoys

295 days with
BRIGHT SUNSHINE
per year and has
65 days with **RAIN**



Average
TEMPERATURE
in January is
3.5 °C
and in July is
18.1 °C



Ladysmith's
LAND AREA is
1,207
hectares



Ladysmith enjoys

26 kilometres of **TRAILS** and
110 hectares (272 acres) of **PARKLAND**

Education

Ladysmith has small friendly schools.



Over 60%

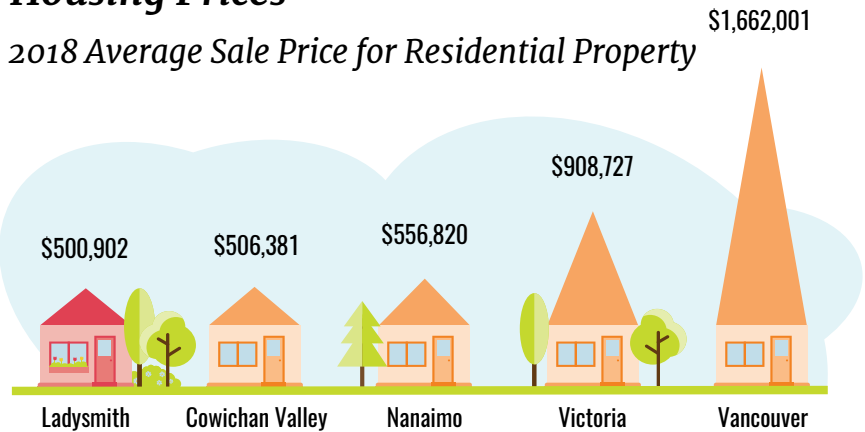
of Ladysmith's population
aged 25-64 years has a
**POST-SECONDARY
DIPLOMA, DEGREE OR
CERTIFICATE**

SCHOOL	STUDENTS*	GRADES
Ladysmith Primary School	236	(K-3)
Ladysmith Intermediate School	296	(4-7)
Ladysmith Secondary School	565	(8-12)
École North Oyster Elementary	338	(K-7) (offers French Immersion)

*Sept 2018 – June 2019

Housing Prices

2018 Average Sale Price for Residential Property



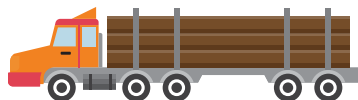
Income



**MEDIAN
HOUSEHOLD INCOME** is
\$67,674

A VIBRANT ECONOMY

Business & Housing



Ladysmith has
60 hectares
of actively used
INDUSTRIAL LAND

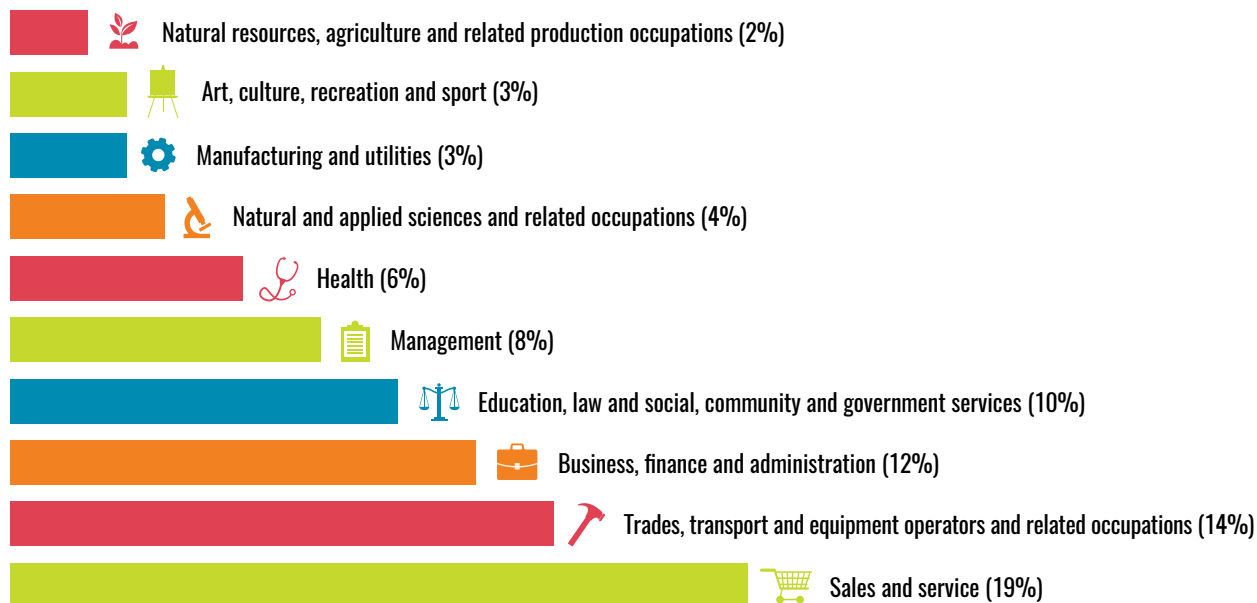


In 2018 Ladysmith had
508 active
BUSINESS LICENCES

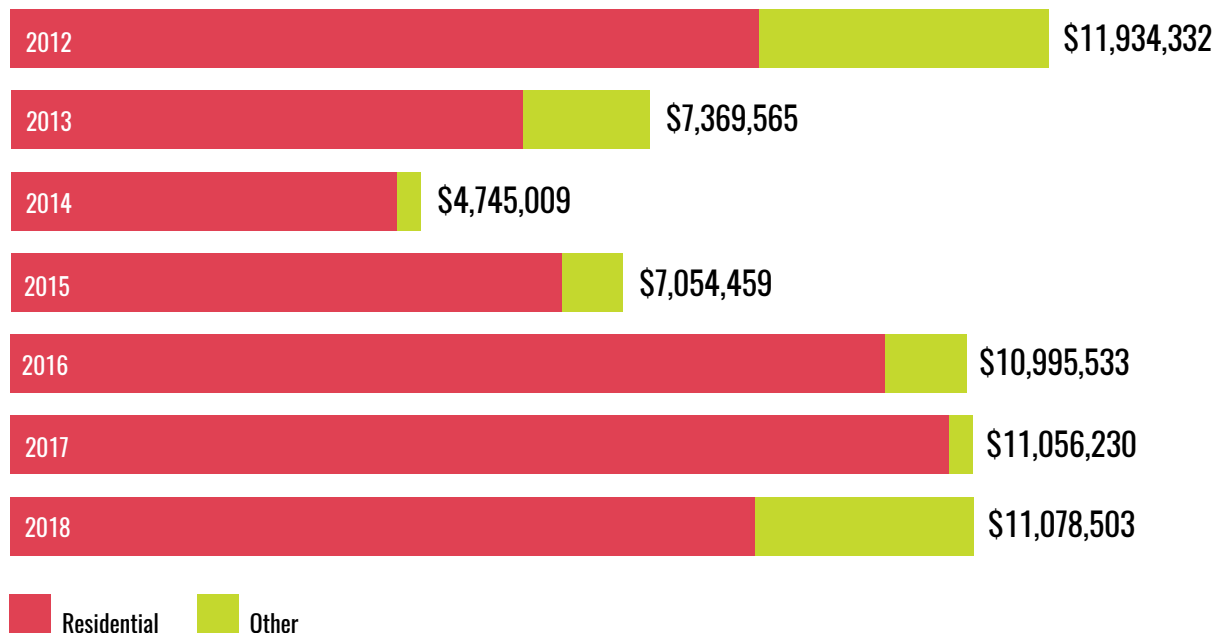


80.5%
of Ladysmith households
OWN THEIR HOMES

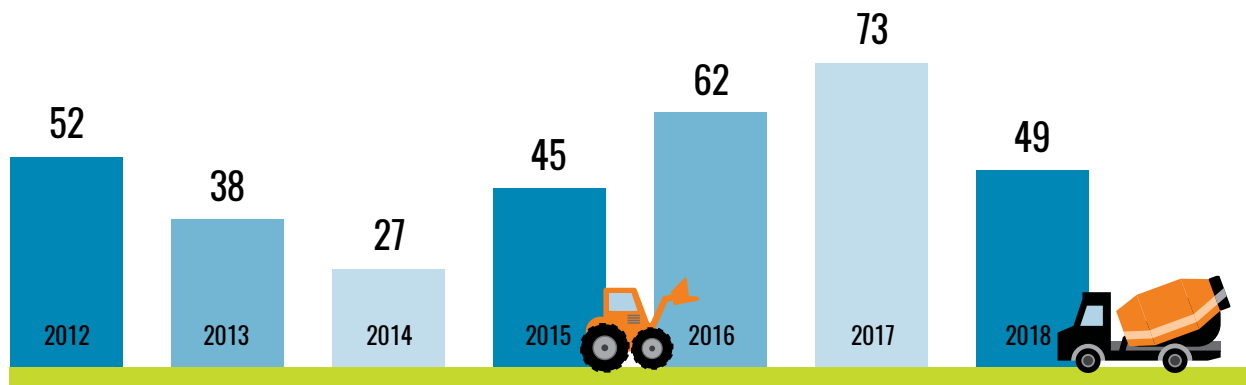
Ladysmith Employment Sectors 2016



Building Permit Values 2012 – 2018



Number of new dwelling units constructed in Ladysmith each year.





Town of Ladysmith
Development Services Department
132C Roberts Street P.O. Box 220,
Ladysmith, British Columbia, V9G 1A2
ladysmith.ca | (250) 245-6415



This paper contains 100% post-consumer waste.

zero

100%
carbon
neutral

by Hemlock Printers
www.hemlock.com/zero