

TOWN OF LADYSMITH



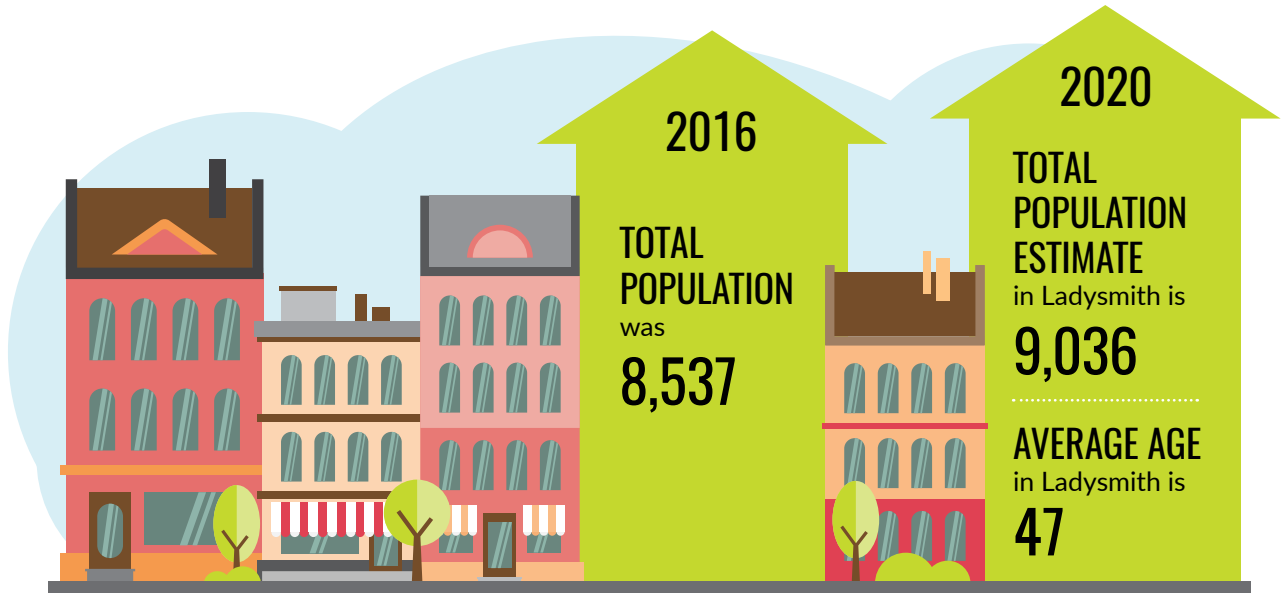
OPEN *for*
BUSINESS
2019 Award Finalist

COMMUNITY PROFILE

Celebrate Our Present. Embrace Our Future. Honour our Past.

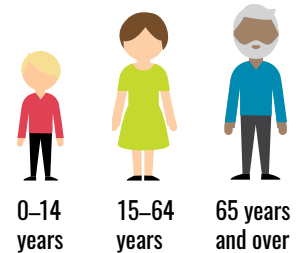
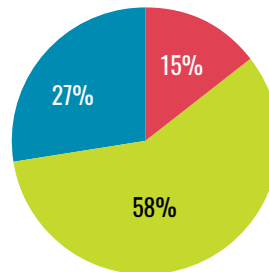
DEMOGRAPHICS

Population & Age



From 2011 to 2016
the population in
Ladysmith grew by **7.8%**

Age Distribution



Households

Ladysmith has

2,540 SINGLE DETACHED HOUSES,
945 ATTACHED DWELLINGS, and
225 MOBILE DWELLINGS



Ladysmith has
an average of

2.3 people
PER HOUSEHOLD



Location

Ladysmith is
**CONVENIENTLY
LOCATED**

88 km
to Victoria and
23 km
to Nanaimo

British
Columbia
CANADA

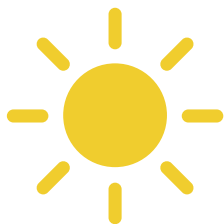
Nanaimo
Ladysmith
Victoria
Vancouver

Seattle

Washington
USA

QUALITY OF LIFE

Weather & Land

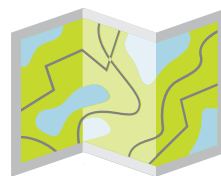


Ladysmith enjoys

295 days with
BRIGHT SUNSHINE
per year and has
65 days with **RAIN**



Average
TEMPERATURE
in January is
3.5 °C
and in July is
18.1 °C



Ladysmith's
LAND AREA is
1,207
hectares



Ladysmith enjoys

26 kilometres of **TRAILS** and
110 hectares (272 acres) of **PARKLAND**

Education

Ladysmith has small friendly schools.



Over 60%

of Ladysmith's population
aged 25-64 years has a

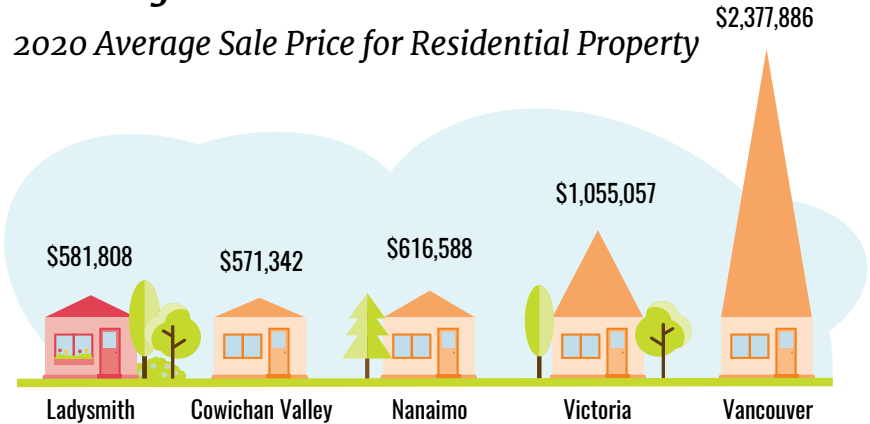
**POST-SECONDARY
DIPLOMA, DEGREE OR
CERTIFICATE**

SCHOOL	STUDENTS*	GRADES
Ladysmith Primary School	282	(K-3)
Ladysmith Intermediate School	255	(4-7)
Ladysmith Secondary School	604	(8-12)

*Sept 2020 – June 2021

Housing Prices

2020 Average Sale Price for Residential Property



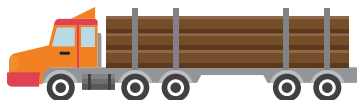
Income



**MEDIAN
HOUSEHOLD INCOME is
\$67,674**

A VIBRANT ECONOMY

Business & Housing



Ladysmith has

60 hectares
of actively used
INDUSTRIAL LAND



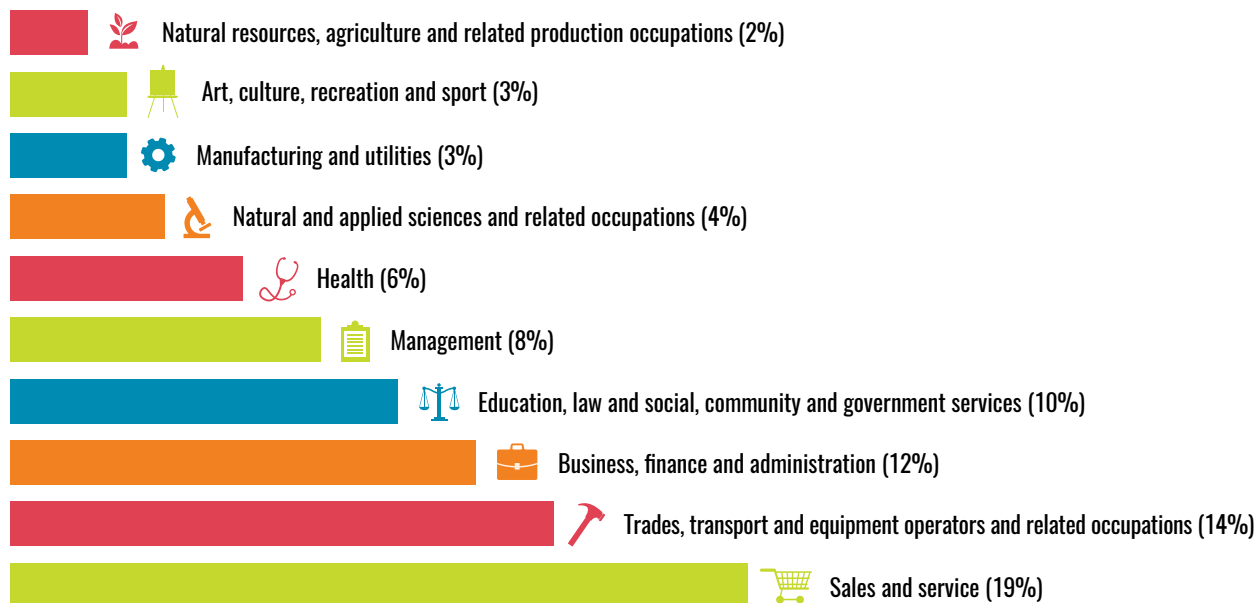
In 2020 Ladysmith had

481 active
BUSINESS LICENCES

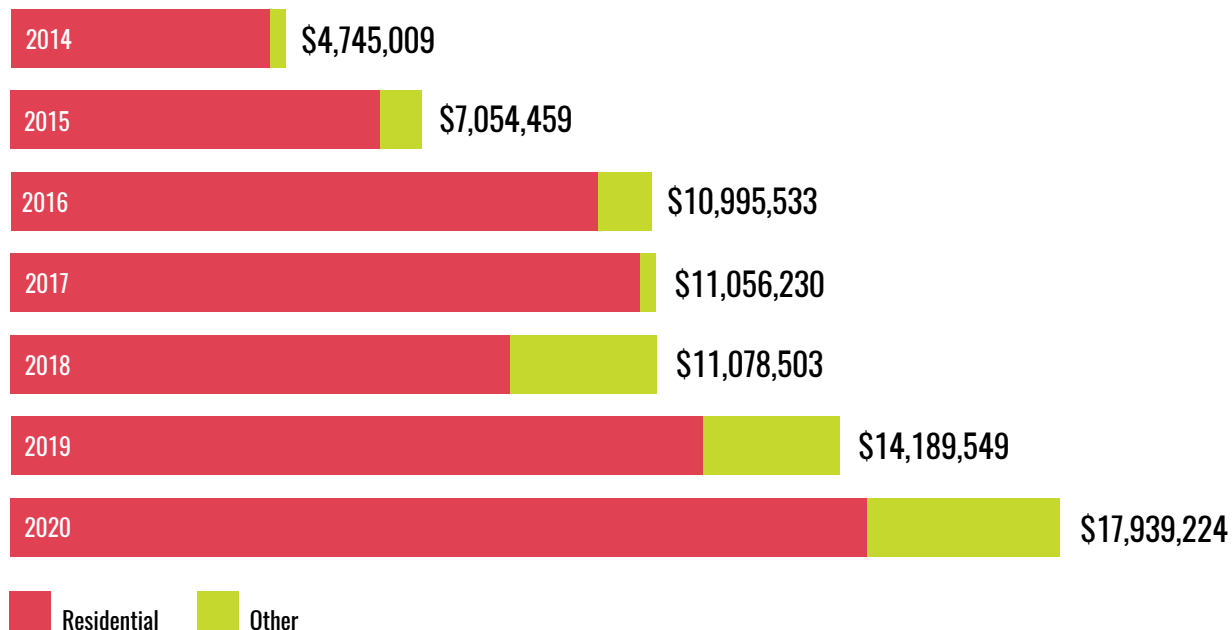


80.5%
of Ladysmith households
OWN THEIR HOMES

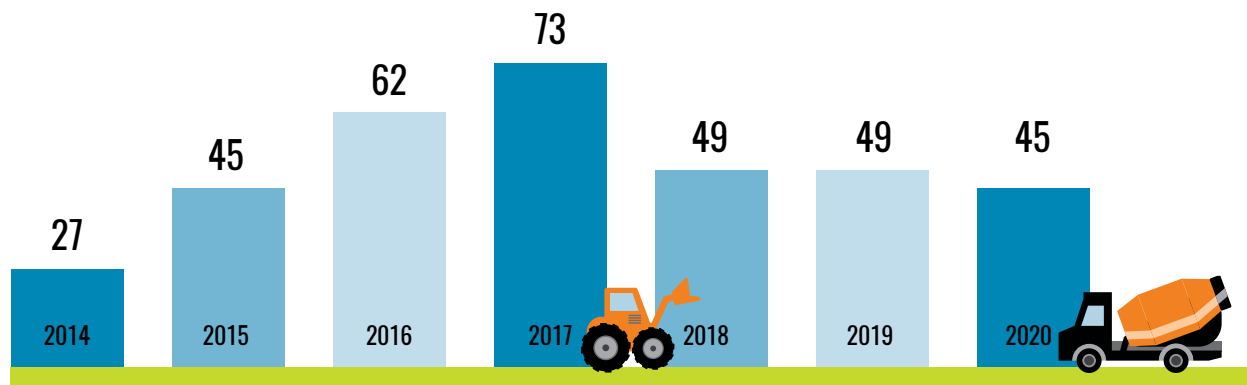
Ladysmith Employment Sectors 2016

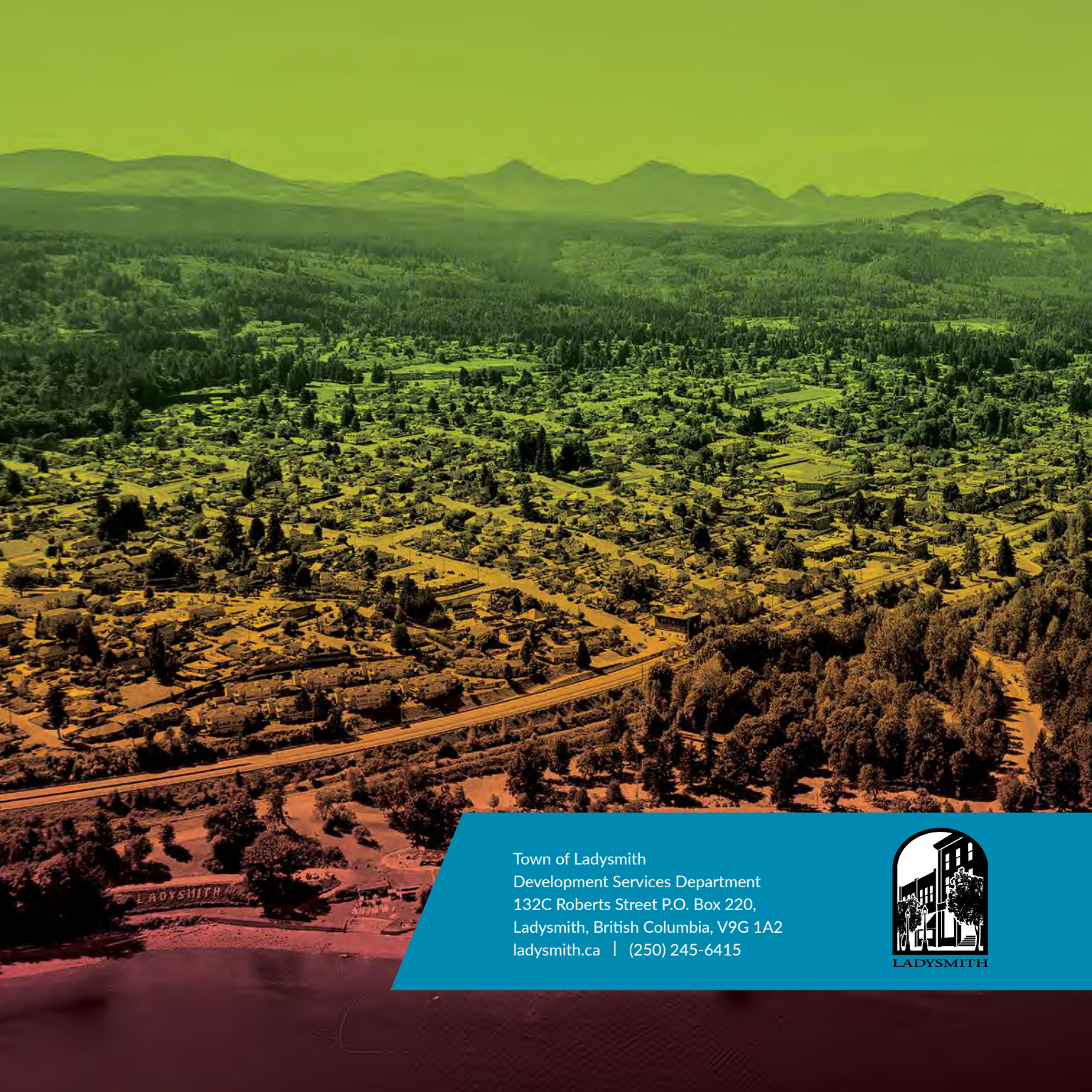


Building Permit Values 2014 – 2020



Number of new dwelling units constructed in Ladysmith each year.





Town of Ladysmith
Development Services Department
132C Roberts Street P.O. Box 220,
Ladysmith, British Columbia, V9G 1A2
ladysmith.ca | (250) 245-6415

