



Parks, Recreation, & Culture

Invitation to Tender

No. 2023-PRC-06

Arts and Heritage Hub

ADDENDUM #10

For further information:
Contact: Chris Barfoot
cbarfoot@ladysmith.ca
250.245.6421

Tender Issue Date:	Thursday, June 29, 2023
Addendum #1:	Thursday, July 6, 2023
Addendum #2	Thursday, July 31, 2023
Addendum #3	Thursday, August 10, 2023
Addendum #4	Monday, August 14, 2023
Addendum #5	Wednesday, August 16, 2023
Addendum #6	Tuesday, August 22, 2023
Addendum #7	Wednesday, August 23, 2023
Addendum #8	Monday, August 28, 2023
Addendum #9	Wednesday, August 30, 2023
Addendum #10	Friday, September 1, 2023
Site Visit:	10:00 a.m., Friday, August 11, 2023
Tender Closing:	2:00 p.m., Thursday, September 7, 2023
Tender Opening:	2:15 p.m., Thursday, September 7, 2023 Ladysmith City Hall



Addendum #10: Invitation to Tender (ITT) No. 2023-PRC-06

Arts and Heritage Hub

This Addendum includes general questions.

Issued: September 1, 2023

This Addendum shall be read in conjunction with and considered as an integral part of the Invitation to Tender (ITT). Revisions supersede the information contained in the original ITT or previously issued Addendum. No consideration will be allowed for any extras due to any Proponents not being familiar with the contents of this Addendum. All other terms and conditions remain the same.

ADDENDUM

INCLUDE attached 'Addendum – TA0012 – CLT Roof Alternative' and 'Addendum – TA0011 – General Questions' documents.

End of Addendum #10



Tender Addendum TA012

Contractor Reference: None

Date 2023.08.30

Project 2032 LAHH

Client Town of Ladysmith

The following addendum supersedes information contained in drawings, specifications and any previous addenda for the project to the extent referenced. This Addendum forms part of the tender documents and is subject to all of the conditions set out in the contract conditions.

CLT roof alternative

1. 5-ply 180 mm European Spruce CLT Panels is **not an acceptable alternative** to 175mm FLUTED GLT panels.

Reason for Change:

Distribution List

Chris Barfoot, Town of Ladysmith, cbarfoot@ladysmith.ca

Ben Checkwitch, Checkwitch Poiron Architects Inc., ben@cparch.ca

Nick De Ridder, Fast + Epp, nderidder@fastepp.com

Per Hector Alcalá, Architect AIBC

Build Extraordinary Build LegacyClient Name: Town of Ladysmith
Contractor Name: Kinetic Construction Ltd.
Client Project Reference: Ladysmith Arts & Heritage Hub
MTS Reference: 2308-04 REV 1

1. General Summary

Mass Timber Services (MTS) is pleased to support your endeavors towards your mass timber project and become your leading service and supply company of choice, particularly within the field of mass timber building products, connectors, and support services such as mass timber engineering certification, shop drawings, logistics and technical support related to your mass timber requirements. Enclosed please find your estimate along with assumptions and relevant information in handling complete mass timber products and connectors.

Located in Ladysmith, B.C., the Mass Timber building you have planned will make a fantastic addition to the surrounding landscape.

NOT APPROVED

Hector Alcala
Aug 30, 2023

Build Extraordinary Build Legacy

Client Name: Town of Ladysmith
Contractor Name: Kinetic Construction Ltd.
Client Project Reference: Ladysmith Arts & Heritage Hub
MTS Reference: 2308-04 REV 1

3. Scope of Work – Client General Requirements

- 3.1. To provide high quality proprietary products within the Mass Timber scope of supply.
- 3.2. To provide technical services within the Mass timber scope of supply.
- 3.3. Optional areas related to Mass Timber scope of supply the client may be interested in.
- 3.4. **Drawings referenced for this proposal are design schematics from 2023 PRC 03 Arts and Heritage Hub RFP20(ALL-20 FILES20pp201-376)**

4. Mass Timber Product & Specifications

4.1. General Information

- 4.1.1. MTS will provide Mass Timber mechanical properties to the structural engineer EOR. The EOR will provide all design loads to MTS.
- 4.1.2. Mass timber products and connection products related to engineering is included.
- 4.1.3. Structural engineering related to mass timber components such as, but not limited to, sill hold down brackets, lifting plates, engineering of temporary supports/ structures, shoring, installation plans etc. are not currently provided within this quotation.
- 4.1.4. Storage of products within shipped sea-containers on/off site may be required (site dependent) and not currently provided within this quotation.
- 4.1.5. Unloading, staging and handling on site is not currently included within this quotation.
- 4.1.6. Moisture mitigation for any mass timber materials is a critical issue in the functionality of the materials and assembly. Please see MTS PIB-109-R1 for further details, or independent recommendations from FP innovations to ensure you have proper mitigation for your location.
- 4.1.7. Allowance for Cladding is not currently included within this quotation.
- 4.1.8. Material handling equipment at receiving destination not currently included within this quotation.

CALGARY, AB, CANADA
3, 11651 – 40 Street S.E.
Calgary Alberta
Canada T2Z 4M8

PALM DESERT, CA, USA
74-710 Hwy 111
Ste. 105-#408
Palm Desert, CA 92260

GOLDEN, BC, CANADA
202, 912 - 11 Avenue South
Golden British Columbia
Canada T0A 1L0

Build Extraordinary Build Legacy

Client Name: Town of Ladysmith
Contractor Name: Kinetic Construction Ltd.
Client Project Reference: Ladysmith Arts & Heritage Hub
MTS Reference: 2308-04 REV 1

4.1.9. Surface finishing of wood products with additional puttying, sanding, staining or other finished application is not currently incorporated within this quotation, due to possible encapsulation or other requirements not yet known or requested.

Please Note: MTS has defined a number of items noted above that are not currently within the scope of this quotation. However, the various items noted as exclusionary at this time can certainly be provided by MTS upon client request – simply let an MTS representative know and an optional product or service quotation for the requested item will be provided.

CALGARY, AB, CANADA
3, 11651 – 40 Street S.E.
Calgary Alberta
Canada T2Z 4M8

Phone: 403-692-3000

PALM DESERT, CA, USA
74-710 Hwy 111
Ste. 105-#408
Palm Desert, CA 92260

www.masstimberservices.com

GOLDEN, BC, CANADA
202, 912 - 11 Avenue South
Golden British Columbia
Canada T0A 1L0

Phone: 250-272-3339

Build Extraordinary Build Legacy

Client Name: Town of Ladysmith
Contractor Name: Kinetic Construction Ltd.
Client Project Reference: Ladysmith Arts & Heritage Hub
MTS Reference: 2308-04 REV 1

4.2. CLT Roof Panels

- 4.2.1. 5-ply 180 mm European Spruce CLT Panel for scope of work.
- 4.2.2. CLT panels with a strength grade of C24 are quoted for scope of work.
- 4.2.3. Typical panels to be 2200 mm wide.
- 4.2.4. Visual grade CLT material.
- 4.2.5. Moisture Protection during transit and on-site protection is included.

4.3. Glulam Columns and Beams

- 4.3.1. European Spruce glulam beams with a strength grade of GL28c are quoted for scope of work.
- 4.3.2. One coat of shop clear stain is included.
- 4.3.3. The strength grade of GL28c has the following characteristic values of material properties.
 - 4.3.3.1. Bending strength: 28 MPa.
 - 4.3.3.2. Tensile Strength: 19.5 MPa.
 - 4.3.3.3. Compressive strength: 24 MPa.
 - 4.3.3.4. Modulus of elasticity: 12500 MPa.

5. Connectors / Screws

- 5.1. Please note: The documents provided to MTS do not include enough detailed information to provide a fixed price for connectors at this time.
 - 5.1.1. An allowance of \$25,384.68 CDN has been included for hardware and connectors that are mentioned within the scope of drawings/designs provided to MTS. A firm quotation will be provided upon completion of QTO drawings to ensure exact products are specified and offered.
 - 5.1.2. Specifications to be developed with screw supplier and engineer and provided to MTS by engineer of record.
- 5.2. Standard Screws have been estimated within this quotation.
 - 5.2.1. Allowance for standard screws that may require adjustments once detailing commences and accurate quantities and specifications are available.
- 5.3. Custom fitting to make up for inaccuracies by other trades is not included within this quotation.
- 5.4. Special Connectors, whether for structural or visual purposes, shall be priced separately as an option upon request.

6. Mass Timber Services 3D Model Drawings

6.1. Reference Drawings:

- 6.2. Drawings referenced for this proposal are design schematics from **Drawings referenced for this proposal are design schematics from 2023 PRC 03 Arts and Heritage Hub RFP20(ALL-20 FILES20pp201-376)**
- 6.3. Shop Drawings, approval drawings, final production drawings, installation drawings are included in the contract price.
- 6.4. One (1) set of shop drawings included with purchase of Mass Timber products related to the project. Additional drawings will require additional related time / cost.
- 6.5. Two (2) review cycles of approval drawings incorporated within material quotation.
- 6.6. Quantity Take Off (QTO) drawings will be provided to authorizing parties to confirm the measurements within drawings are dimensionally accurate to your design drawings.

Client Name: Town of Ladysmith

Contractor Name: Kinetic Construction Ltd.

Client Project Reference: Ladysmith Arts & Heritage Hub

MTS Reference: 2308-04 REV 1

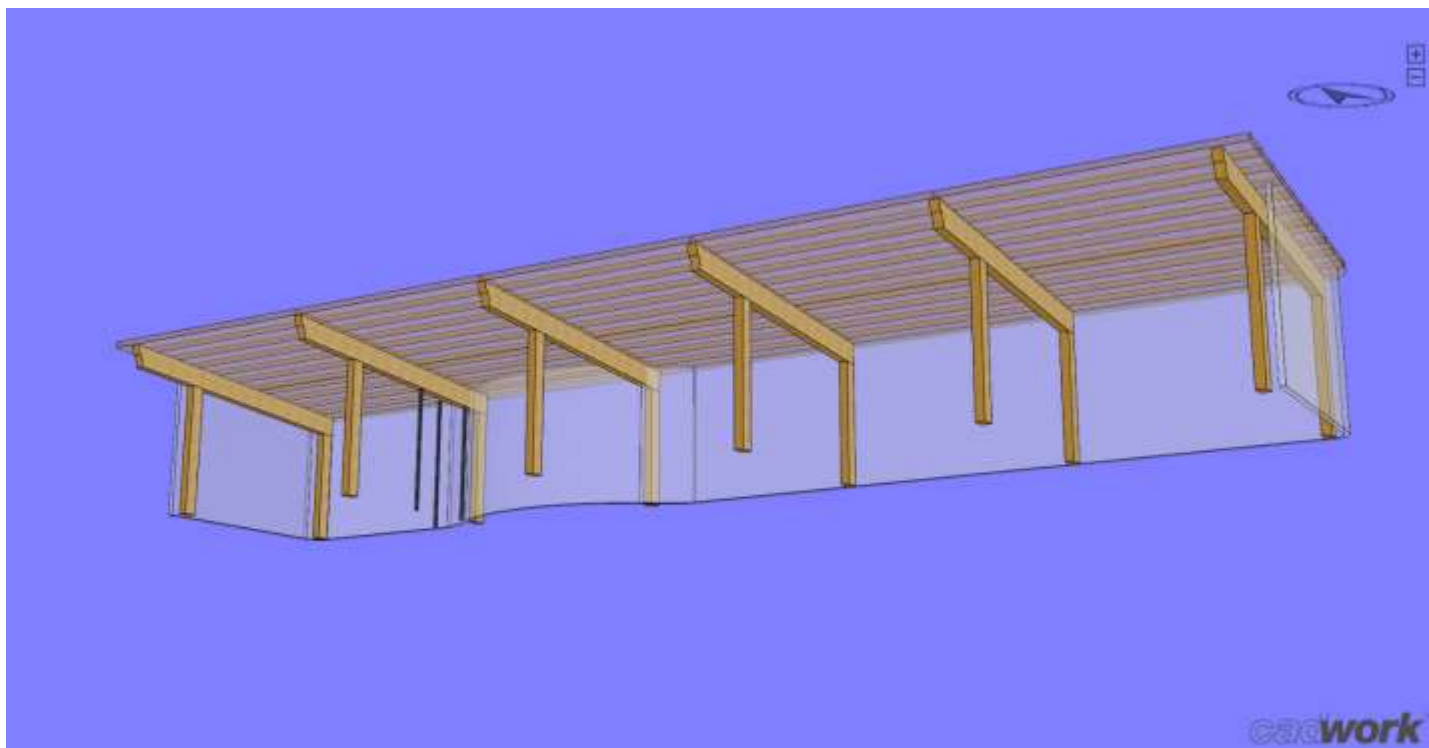
Build Extraordinary Build Legacy

6.7. Signature by authorizing parties on the QTO drawings are required prior to material ordering or commencement of services required to complete order.

6.8. Changes to design made by planning, code authorities, development permit, or construction permit changes that require changes to this mass timber design are not included.

6.9. Mass Timber Services Drawings Supplied model for quantity take off:

6.9.1 View 1: Complete Mass timber building with Glulam & CLT



CALGARY, AB, CANADA
3, 11651 – 40 Street S.E.
Calgary Alberta
Canada T2Z 4M8

Phone: 403-692-3000

PALM DESERT, CA, USA
74-710 Hwy 111
Ste. 105-#408
Palm Desert, CA 92260

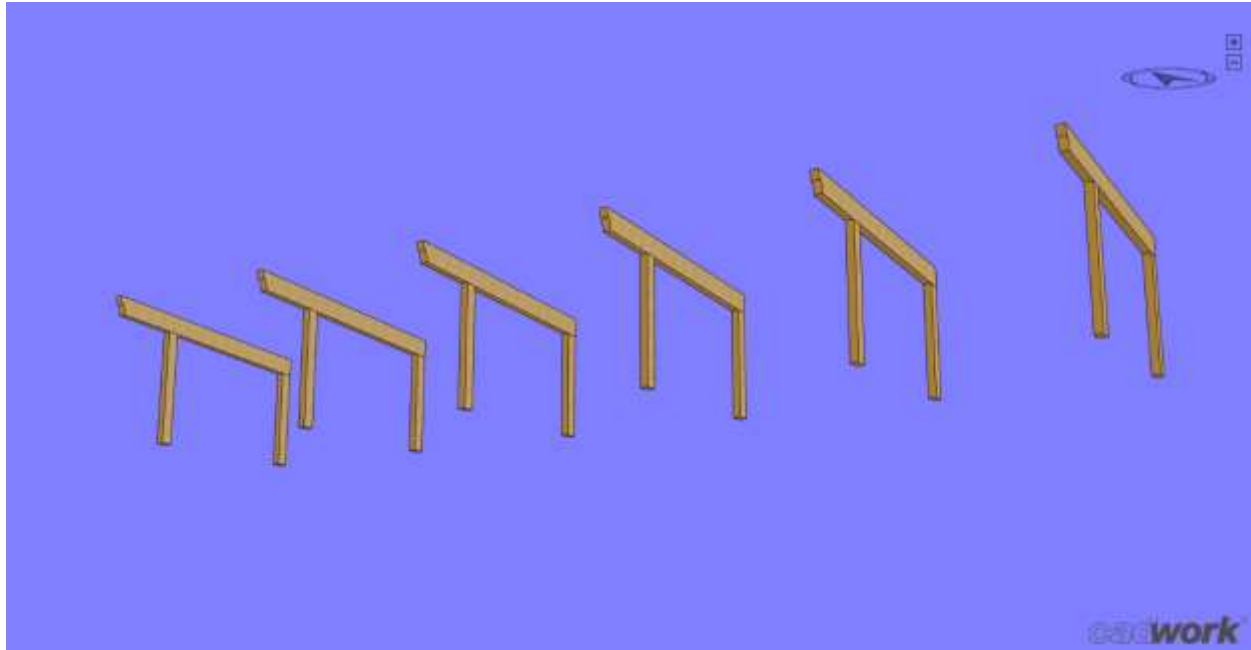
www.masstimberservices.com

GOLDEN, BC, CANADA
202, 912 - 11 Avenue South
Golden British Columbia
Canada T0A 1L0

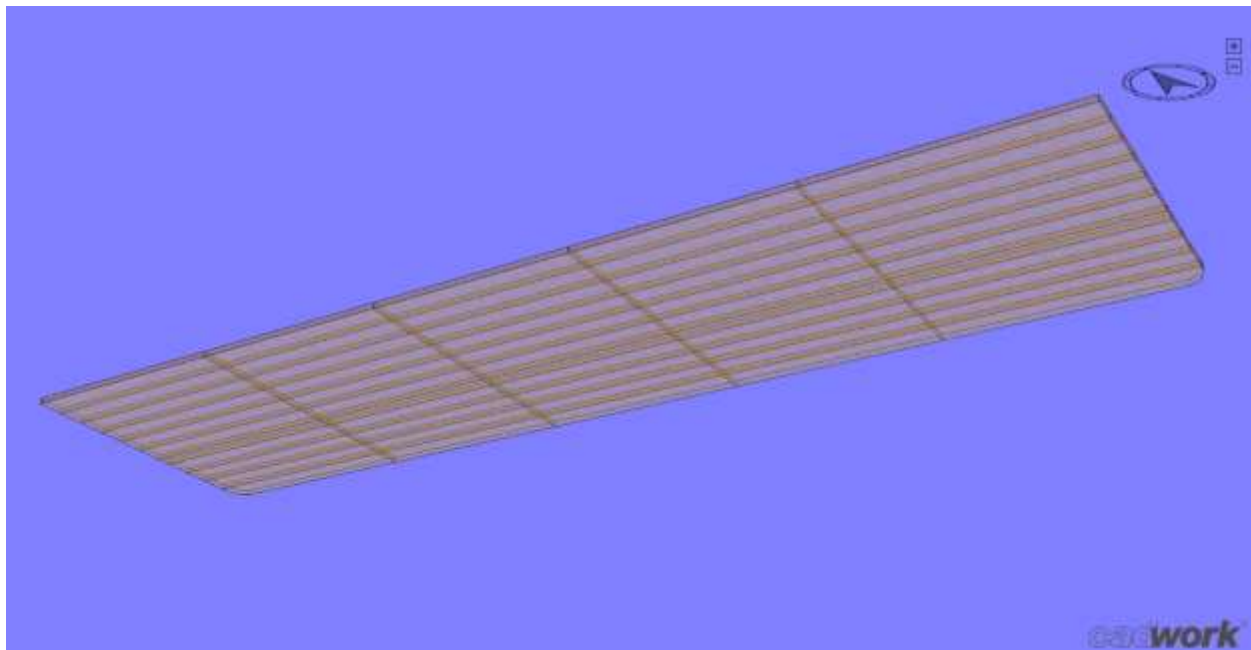
Phone: 250-272-3339

Build Extraordinary Build Legacy

6.9.2 View 1: Mass timber Glulam columns and beams



6.9.3 View 1: CLT Roof Panels



CALGARY, AB, CANADA
3, 11651 – 40 Street S.E.
Calgary Alberta
Canada T2Z 4M8

PALM DESERT, CA, USA
74-710 Hwy 111
Ste. 105-#408
Palm Desert, CA 92260

GOLDEN, BC, CANADA
202, 912 - 11 Avenue South
Golden British Columbia
Canada T0A 1L0

Phone: 403-692-3000

www.masstimberservices.com

Phone: 250-272-3339

6 Mass Timber Services Fabrication of Material Requirements

- 7.1 Material for fabrication, if machining of noted components is required, is listed within section 4.
- 7.2 An allowance has been included for a typical level of fabrication of connectors, penetrations and cuts for assembly, door openings, joining sections, mechanical, plumbing, and sprinklers for the mass timber components in this proposal.
 - 7.2.1 Additional penetrations beyond the estimated scope will be subject to review and pricing adjustment related to Fabrication work to be completed.
- 7.3 Quantity Take Off (QTO) CADwork modelling / drawings of currently estimated products that are specified and offered for fabrication and logistical purposes are completed initially.
- 7.4 A firm fabrication quotation can be incorporated within this body upon completion of finalized specifications and design from the authorized parties to allow final completion of the QTO drawings.
- 7.5 Fabrication will include pre-cutting panels to lengths and widths.
- 7.6 MTS will require all penetrations approved by the authorized parties prior to production of the mass timber components.
- 7.7 Any fabrication changes after initiating fabrication are not included within this offering and will be provided at an additional cost of time and materials.
 - 7.7.1 Re-enforcement elements or other related work or materials to provide this work are not currently included within this quotation.
 - 7.7.2 It is strongly recommended to have the MEP and other 'runs' designed into the Mass Timber shop drawings with detailed information related to size and locations.
 - 7.7.3 MTS will require all additional penetrations approved by the authorized parties prior to production of the mass timber components commencing.
 - 7.7.4 MTS can provide an optional cost for any additional penetrations upon request pending approval by authorized parties.
- 7.8 Pre-installation of connectors where possible is included in this quote.

8 Logistics, Documentation and Delivery

- 8.1 Lead time for material, fabrication, and shipping to site as required: Estimate at 12-16 weeks from time of approved shop drawings.
 - 8.1.1 Should delivery penalties be applicable, a contractual safety margin of an additional 6-8 weeks is required for formal contractual purposes.
- 8.2 MTS is providing shipment services of INCO Terms DDP, included within purchase contract (DDP definition: Seller delivers the goods to the agreed place destination, Seller assumes all cost – including import formalities, and risks until the goods are ready for unloading at named place at destination).
 - 8.2.1 The allowance included in this price is based on (3) Containers.
 - 8.2.2 Clarification: Unloading product from sea containers is responsibility of Buyer (please see enclosed MTS PIB 124).
- 8.3 Delivery to project address stated in Section 2: Project Address, or unless otherwise stated in writing from Authorized Parties.
- 8.4 Brokerage Fees included.
- 8.5 Import Tax included (allowance of 3%).
- 8.6 Load documentation of containers will be included.
- 8.7 An erection plan should be prepared and approved before work begins on site:
 - 8.7.1 The erection plan should specify which lifting equipment is needed on site. Depending on the project this will include, for example: a mobile crane/tower crane, special lifting devices if necessary, lifting slings or chains, and eyebolts, etc. MTS can provide optional costs related to this service based upon inclusion with authorizing bodies and in conjunction and timing with other professionals with related requirements.
 - 8.7.2 MTS can provide technical services in this regard to the Authorized Parties upon request - simply let MTS know and we will provide optional costs related to this service.

Build Extraordinary Build Legacy

Client Name: Town of Ladysmith
Contractor Name: Kinetic Construction Ltd.
Client Project Reference: Ladysmith Arts & Heritage Hub
MTS Reference: 2308-04 REV 1

9 Quality Assurance

- 9.1 Quality Assurance / Quality Control: Product specifications are to be approved by appointed party(s) of purchaser, in conjunction with MTS, prior to ordering.
- 9.2 Joining steel components to be straight and without warp, tolerances within +/- 1/8" of dimensions shown on shop drawings and plans.
- 9.3 Any additional work resulting from inaccuracies of steel work will be charged at times + materials + equipment at previously agreed upon rates.
- 9.4 Concrete Elements and embeds to be within +/- 1/8" of specifications.
- 9.5 Certification and standards that are required for your project, can be requested by the authorized parties.

10 Engineering Clarifications

- 10.1 Finalized engineering calculations may affect the mass timber design included in this proposal in which case an updated proposal, including pricing, may be required.
- 10.2 Finalized engineering calculations may affect the Quantity Take Off drawings, at which point an updated set of drawings may be required.
- 10.3 Mass Timber design is included in this proposal, and any changes in finalized engineering requirements may require an updated proposal.
- 10.4 All fire ratings are to be specified by the architect & engineering fire consultants and/or structural engineer of record for the project.
 - 10.4.1 Certification and standards that are required for your project can be specifically requested by authorizing parties.

11 The Benefits of Mass Timber

- 11.1 Preplanned structure within a Design-Assist or Integrated Product Delivery process allows for more surety in costs, and better more accurate delivery targets.
 - 11.2 The Mass Timber construction method cuts down on materials and labor as compared to traditional options.
 - 11.3 Mass Timber installation can be coordinated with other building trades to ensure proper fit for new and existing construction.
-

CALGARY, AB, CANADA
3, 11651 – 40 Street S.E.
Calgary Alberta
Canada T2Z 4M8

PALM DESERT, CA, USA
74-710 Hwy 111
Ste. 105-#408
Palm Desert, CA 92260

GOLDEN, BC, CANADA
202, 912 - 11 Avenue South
Golden British Columbia
Canada T0A 1L0

Build Extraordinary Build Legacy

Client Name: Town of Ladysmith
Contractor Name: Kinetic Construction Ltd.
Client Project Reference: Ladysmith Arts & Heritage Hub
MTS Reference: 2308-04 REV 1

- 11.4 Reduced weight of timber as compared concrete results in significant foundation cost savings.
- 11.5 Reduced timeline to construction completion typically allows a building to go to market sooner.
- 11.6 Can be designed to meet or exceed code minimums for acoustic and fire requirements.
- 11.7 Reduced health and safety premiums and safer working environment at the job site
This method will also improve the structure's environmental performance, reducing its greenhouse gas (GHG) emissions using an alternative to concrete, which is responsible for five percent of world carbon dioxide (CO2) emissions. Wood is the only renewable building material, and the only structural building material whose origins can be certified as sustainable by third-party programs.
- 11.8 Biophilic benefits of Mass Timber building can provide a positive effect on tenants, make you feel like staying longer within the structure, greatly improves building viability, increases acceptability within the community and quite likely provides higher premiums.
- 11.9 Green House Gas (GHG) segregation/mitigation.

(do we remove this section upon finalization of quote, order confirmation, etc – as it is moot at that stage?)

12 Pricing information

12.1 Pricing

- 12.1.1 Please see Terms and Conditions for further pertinent details.
- 12.1.2 Summary of products & services below reflects the details located within sections 3 – 11.

12.2 Taxes:

12.2.1 Applicable Taxes not included in quotation, except for:

- 12.2.1.1 Import Tax included (allowance of 3%).
- 12.2.1.2 Any/All other taxes are additional to the quoted price.

CALGARY, AB, CANADA
3, 11651 – 40 Street S.E.
Calgary Alberta
Canada T2Z 4M8

PALM DESERT, CA, USA
74-710 Hwy 111
Ste. 105-#408
Palm Desert, CA 92260

GOLDEN, BC, CANADA
202, 912 - 11 Avenue South
Golden British Columbia
Canada T0A 1L0

Build Extraordinary Build Legacy

Client Name: Town of Ladysmith
Contractor Name: Kinetic Construction Ltd.
Client Project Reference: Ladysmith Arts & Heritage Hub
MTS Reference: 2308-04 REV 1

12.2.2 Pricing Validity:

12.2.2.1 Pricing is firm for thirty (30) days, based upon materials/product currency exchange valuation between the EU (Euro), USD and/or Canadian currency (material location dependent).

12.2.2.2 All prices quoted in CDN Dollars.

CALGARY, AB, CANADA
3, 11651 – 40 Street S.E.
Calgary Alberta
Canada T2Z 4M8

Phone: 403-692-3000

PALM DESERT, CA, USA
74-710 Hwy 111
Ste. 105-#408
Palm Desert, CA 92260

www.masstimberservices.com

GOLDEN, BC, CANADA
202, 912 - 11 Avenue South
Golden British Columbia
Canada T0A 1L0

Phone: 250-272-3339

Build Extraordinary Build Legacy

Client Name: Town of Ladysmith
Contractor Name: Kinetic Construction Ltd.
Client Project Reference: Ladysmith Arts & Heritage Hub
MTS Reference: 2308-04 REV 1

13.2 Optional Moisture Protection Plan

- 13.2.1 It is strongly recommended to put in place a moisture protection plan to ensure the Mass Timber products are not damaged by weather.
- 13.2.2 Moisture protection preparation plan can be prepared by MTS and related parties handling materials and approved by the GC and the owner.

13.3 Optional Site Advisory of Mass Timber Installation

- 13.3.1 Supervisory assistance for startup assembly of Mass Timber portion of structure.
- 13.3.2 Supervisory assistance with training of mass timber product assembly of the Mass Timber portion of the building is provided to start up the project for a duration of 10 days.
- 13.3.3 Additional Supervisory assistance can be billed every 2 weeks in advance.
- 13.3.4 Installation of the entire mass timber structure is not included at this time.

Build Extraordinary Build Legacy

Client Name: Town of Ladysmith
Contractor Name: Kinetic Construction Ltd.
Client Project Reference: Ladysmith Arts & Heritage Hub
MTS Reference: 2308-04 REV 1

13. General Terms & Conditions

13.11 Mass Timber Services Ltd. (Canada) is the legal entity which is making this offering.

13.11.1 Various documentation and statements related to the Mass Timber Services company are abbreviated as 'MTS'.

13.12 Mass Timber Services will require the most recent revision of the quotation/Order Confirmation provided to be incorporated within the contract, purchase order or other order documentation provided by client (due to critical details within quotation/Order Confirmation).

13.13 Quotation Validity:

13.13.1 Revisions:

13.13.1.1 Example: 1234-01-REV₁ revision will have any changes shown as 1234-01-REV₂, etc.

13.13.1.2 Every revision is superseded by its predecessor; previous details, pricing and delivery structures are null/void upon receipt of updated revision.

13.13.1.3 Due to client change requests, a quotation is revised in its entirety (Culmination of revised material & services pricing, revised design parameters, shipping parameters/pricing for the entire project and nothing carries over from previous revisions).

13.13.2 Client Scope Change:

13.13.2.1 Any change in scope of product or services provided due to architectural, engineering or contractor specifications, updates, changes, improvements, alterations to initial proposal requires a new quotation submission, and voids this or any previous quote submission.

13.13.2.2 Any change in scope of product or services by client will require notification of changes. MTS will not be responsible for checking client websites, construction portal sites, or other means of information offering related to project, without advisory notices of document and/or other changes in scope of project.

13.13.3 MTS will only confirm and commit to a written quotation in this particular format.

CALGARY, AB, CANADA
3, 11651 – 40 Street S.E.
Calgary Alberta
Canada T2Z 4M8

PALM DESERT, CA, USA
74-710 Hwy 111
Ste. 105-#408
Palm Desert, CA 92260

GOLDEN, BC, CANADA
202, 912 - 11 Avenue South
Golden British Columbia
Canada T0A 1L0

Build Extraordinary Build Legacy

Client Name: Town of Ladysmith
Contractor Name: Kinetic Construction Ltd.
Client Project Reference: Ladysmith Arts & Heritage Hub
MTS Reference: 2308-04 REV 1

13.13.4 Verbal discussions that include pricing possibilities are considered very high-level estimates only.

13.14 Payment Terms:

13.14.1 15% Deposit for design, engineering, shop drawings.

13.14.2 30% at order placement.

13.14.3 30% at order completion and readiness to ship from manufacturing facility (client verification is most welcome).

13.14.4 25% upon arrival at Project Address (as stated in section 2).

13.15 Taxes:

13.15.1 Applicable Taxes not included in quotation, except for:

13.15.1.1 Import Tax included (allowance of 3%).

13.15.1.2 Any/All other taxes are additional to the quoted price.

13.15.2 Shipping Terms:

13.15.2.1 MTS is providing shipment services of INCO Terms DDP (included in purchase contract):

13.15.2.2 DDP: Seller delivers the goods to the agreed place destination, Seller assumes all cost – including import formalities, and risks until the goods are ready for unloading at named place at destination.

13.15.3 Exchange Rates;**13.15.4 Exchange Rates:**

13.15.4.1 Materials purchased from the European Union will be subject to exchange rate adjustment to the USA.

13.15.4.2 Upon confirmation of utilization of MTS by client, the foreign exchange figure will be confirmed based on the exchange rate published at EUR to USD interbank rate +/- 2% fluctuation (0.91 on 06-05-2023) and confirmed at time of confirmation.

13.15.5 Preliminary pricing estimate is based on:

13.15.5.1 The information provided to MTS at this time of quotation.

13.15.5.2 Subject to change dependent upon final IFC documents, engineering reviews, and signature of authorizing bodies upon MTS Quantity Take Off Drawings (QTO).

13.15.5.3 Pricing is solely based on preliminary assumptions with regards to dimensions or load requirements. These were retrieved from schematics,

Build Extraordinary Build Legacy

Client Name: Town of Ladysmith
Contractor Name: Kinetic Construction Ltd.
Client Project Reference: Ladysmith Arts & Heritage Hub
MTS Reference: 2308-04 REV 1

renderings and other generic project details provided to us and are subject to engineering approvals which were unavailable at the time of proposal preparation.

- 13.15.5.4 Pricing based on Mass Timber Services proposed timber sizing and are subject to change as per Engineer's recommendation.
- 13.15.5.5 This is a preliminary estimate and does not carry any legal obligations to any of the parties involved.
- 13.15.5.6 The quotation is provided to help in determining whether the proposed figures are reasonable to those involved.
- 13.15.5.7 Should the involved parties decide to proceed, further details will be clarified to form part of the formal contract to be signed.
- 13.15.5.8 Field measuring and surveys of other trades installations and products are not included.
- 13.15.5.9 Survey references are the supplied documents.
- 13.15.5.10 Any site deviation from documents is the responsibility of the authorizing parties.
- 13.15.5.11 'As Installed' measurements of components by other trades, foundations, steel or other site structures, to be supplied by the general contractor and or/ architect/engineers if required. to Mass Timber Services Ltd. prior to completion of shop drawings. Any site dimensions and adjustments due to those measurements, must be reflected in the shop drawings, as all fabrication of mass timber products will be made as per shop drawings.
- 13.15.5.12 Engineering field reviews are to be completed by Engineer of Record (EOR), structural engineer and/or other building specialist authorized by the authorizing parties.

13.16 Exclusionary Items from this quotation:

- 13.16.1 Traffic control.
 - 13.16.2 Safety railings & fall protection systems to be supplied by other parties within construction group.
 - 13.16.3 All connectors as specified in the drawings listed in this proposal are included in this proposal except for:
 - 13.16.3.1 All steel members, including HSS and angles, and related connecting screws and bolts are not included, to be provided by steel supplier.
 - 13.16.3.2 All temporary steel and related connectors are not included.
-

CALGARY, AB, CANADA
3, 11651 – 40 Street S.E.
Calgary Alberta
Canada T2Z 4M8

PALM DESERT, CA, USA
74-710 Hwy 111
Ste. 105-#408
Palm Desert, CA 92260

GOLDEN, BC, CANADA
202, 912 - 11 Avenue South
Golden British Columbia
Canada T0A 1L0

Build Extraordinary Build Legacy

Client Name: Town of Ladysmith
Contractor Name: Kinetic Construction Ltd.
Client Project Reference: Ladysmith Arts & Heritage Hub
MTS Reference: 2308-04 REV 1

- 13.16.3.3 Concrete in beds into foundations.
- 13.16.4 Other structural components (footing, load bearing walls, posts, and beams, etc.) are not included in our scope.
- 13.17 Additional cost incursions will occur due to:
 - 13.17.1 Delays and/or changes by other trades or authorizing parties.
 - 13.17.2 Delays and/or changes due to technical requirement changes or additions by the owner's consultant(s) after contract documents have been completed/signed.
 - 13.17.3 Any mock-ups or special requests are not included in this quotation will be considered an additional cost and will be priced separately and additionally.
 - 13.17.4 Any changes, modifications, additions, or additional detailing impacting the design, modeling or fabrication will be priced separately or within a revised quotation.
- 13.18 All Mass Timber products and services provided by Mass Timber Services will remain the property of Mass Timber Services until paid in full.
- 13.19 Mass Timber Services will not be responsible, nor liable for damages including but not inclusive of; aggravated, consequential, or punitive damages of any fashion based upon the following:
 - 13.19.1 As a result of Force Majeure.
 - 13.19.2 As a result of subsequent change orders by authorizing bodies.
 - 13.19.3 As a result of delays due to approval process', other related action, or due to causes beyond its reasonable control.
 - 13.19.4 For proper fit of components if said components get mishandled, deformed, exposed to elements, or are not properly installed by others.
 - 13.19.5 Assume level, compact substrates and all other adjoining building components to be as per plans.

Build Extraordinary Build Legacy

Client Name: Town of Ladysmith
Contractor Name: Kinetic Construction Ltd.
Client Project Reference: Ladysmith Arts & Heritage Hub
MTS Reference: 2308-04 REV 1

Additional Related technical information related to this proposal:**MTS PIB 108 Fire Resistance of CLT & GLT Panels****MTS PIB 109 R1- Moisture Risk Management for Mass Timber****MTS PIB 110 Sustainability of Mass Timber Products****MTS PIB 113 MEP Placement in Mass Timber Buildings****MTS PIB 115 Technical Information of CLT Panels****MTS PIB 124 Technical information on Unloading of Sea Containers****MTS PIB 123 Critical Path Requirements for project start up****MTS PIB European Technical Assessment Specifications****MTS PIB Glulam Technical Bulletin European Spruce****MTS Partnership with Mayr Melnhoff Holz****We look forward to working with you on your building project!**

CALGARY, AB, CANADA
3, 11651 – 40 Street S.E.
Calgary Alberta
Canada T2Z 4M8

Phone: 403-692-3000

PALM DESERT, CA, USA
74-710 Hwy 111
Ste. 105-#408
Palm Desert, CA 92260

www.masstimberservices.com

GOLDEN, BC, CANADA
202, 912 - 11 Avenue South
Golden British Columbia
Canada T0A 1L0

Phone: 250-272-3339



Tender Addendum TA011

Contractor Reference: None

Date 2023.08.31

Project 2032 LAHH

Client Town of Ladysmith

The following addendum supersedes information contained in drawings, specifications and any previous addenda for the project to the extent referenced. This Addendum forms part of the tender documents and is subject to all of the conditions set out in the contract conditions.

General Question

1. Please refer to attached document.

Reason for Change:

Distribution List

Chris Barfoot, Town of Ladysmith, cbarfoot@ladysmith.ca

Ben Checkwitch, Checkwitch Poiron Architects Inc., ben@cparch.ca

Per Hector Alcalá, Architect AIBC



TA011 – General Questions – Arts & Heritage Hub

1. Provide Phase 1 & 2 environmental testing for the property/project scope. It was suggested that there is known ground contamination

An SDS has been submitted to the province. The Town does not have an anticipated date when this will be completed. (TOL response). See TA009

2. Confirm scope of tender is “Project Boundary – Phase 1” as shown on A111, and that this applies for all disciplines.

Project boundary doesn’t apply for service connections (water, sewer and electrical). This services need to be trenched and connected to the existing infrastructure as per consultants drawings.

3. A111 indicates 2 options for PMT locations. Confirm PMT not required (not shown on E drawings)

No PMT is required in the project. See Tender Addendum #6 which contains Electrical Addendum #01 with the description of the electrical service connection.

4. Confirm site services will be brought to aforementioned project boundary by others and provide schedule for site services/civil works outside of project scope.

The site services connections are part of the scope of the tender and they can extend beyond the project boundary.

5. Is building permit in hand? If not, as it been applied for/ETA? Confirm BP costs not to be paid by GC.

The BP it’s been submitted and approved by the Town of Ladysmith. The GC is not responsible for obtaining the Building Permit

6. Please publish the Phase 1 brown site report.

Unfortunately, the Phase 1 brown site report is not publicly available at this time. We will ensure that the contractors are informed and updated once the Site Disclosure Statements (SDS) is released.

7. Please publish the Town’s brown site remediation plan for the Phase 1 site.

Unfortunately, the Site Remediation Plan is not publicly available at this time. We will ensure that the contractors are informed and updated once the Site Disclosure Statements (SDS) is released.

8. Please publish the Town’s Oyster Road development plan and Nature trail plan as it relates to Phase 1:

There are only preliminary plans for Oyster Road development plan and surrounding trail. They can be found here:

<https://www.ladysmith.ca/business-development/development-resources/waterfront-area-plan>

- a. Site access, lay down area and road/ nature trail closure for safety (rolling rocks, trees runaway material etc.).

The nature trail may be temporarily closed during the course of construction activities, particularly when activities such as pile placement and foundation work are underway.

- b. Please identify all Phase 1 lay down areas on a map.

See TA006 - Question 25

9. Should the bid bond amount read 10% of the tender amount (and not 50% as this is not typically the standard amount of a bid bond) and the consent of surety read as per the specs showing 50% Performance bond and 50% labour & material payment bond will be provided should the tenderer be successful?

The bid bond is expected to amount to 10% of the total tender value. Upon selection of the winning bid, the consent of the surety should encompass a Performance Bond of 50% and a Labour and Material payment bond of 50%. As per specification 01 32 00

10. A502 specifies "Mactac IMAGin wallNOODLE Matte White for the wall mural"Would the owner consider "3M Controltac Ultra Removable Graphic Film" as an approved alternate ?

"3M Controltac Ultra Removable Graphic Film" in an acceptable alternate.