



LADYSMITH

FACILITY OPERATIONS

Request for Tender No. 2026-PRC-01 Ladysmith RCMP – HVAC Upgrade Addendum # 01 – April 29, 2026

This Addendum contains:
Drawings for the Proposed Project

For further information
please contact:
Richard Frost
rfrost@ladysmith.ca
250.245.6430

Addendum Issue Date:	April 29, 2026
Tender Issue Date:	April 24, 2026
Tender Closing Date:	1:30 p.m., Friday, May 22 nd , 2026
Tender Opening Date:	1:45 p.m., Friday, May 22 nd , 2026 Ladysmith City Hall



LADYSMITH

Addendum #1: Request for Tender No. 2026-PRC-01 Ladysmith RCMP – HVAC Upgrade This Addendum contains drawings M-1 and M-2 for the proposed project.

SUB-CONSULTANT:

KEYPLAN:

2	24APR2026	ISSUED FOR TENDER	KL
1	29AUG2025	90% COORDINATION	KL
No.	DATE	DESCRIPTION	BY
REVISIONS:			

Mechanical drawings must be read with mechanical specifications. Drawing plot size is 36"x24". Drawings are to be read for the purpose identified in the revision/issue column. Drawings are not for pricing or construction unless specified. These documents are intellectual property of Rocky Point Engineering Ltd. and are for the project in the title block only. Reproduction in any form requires Rocky Point Engineering Ltd.'s express consent.

SEAL:

Permit to Practice #1000700

CLIENT:



PROJECT:
LADYSMITH RCMP - HVAC UPGRADES

320 6TH AVENUE
LADYSMITH, BC

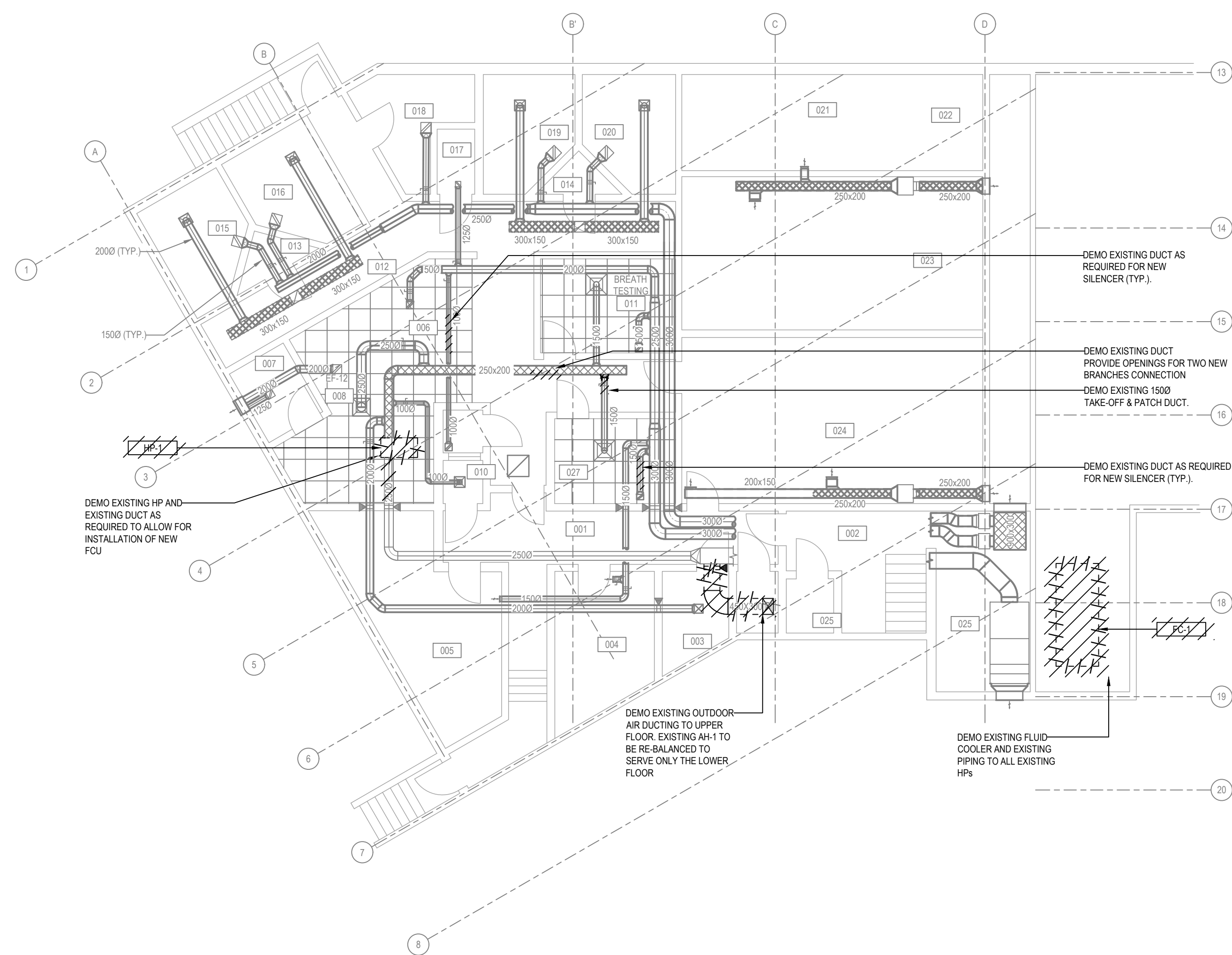
DRAWING NAME:
LADYSMITH RCMP - EXISTING AND DEMO

PROJECT NUMBER:
25353-N

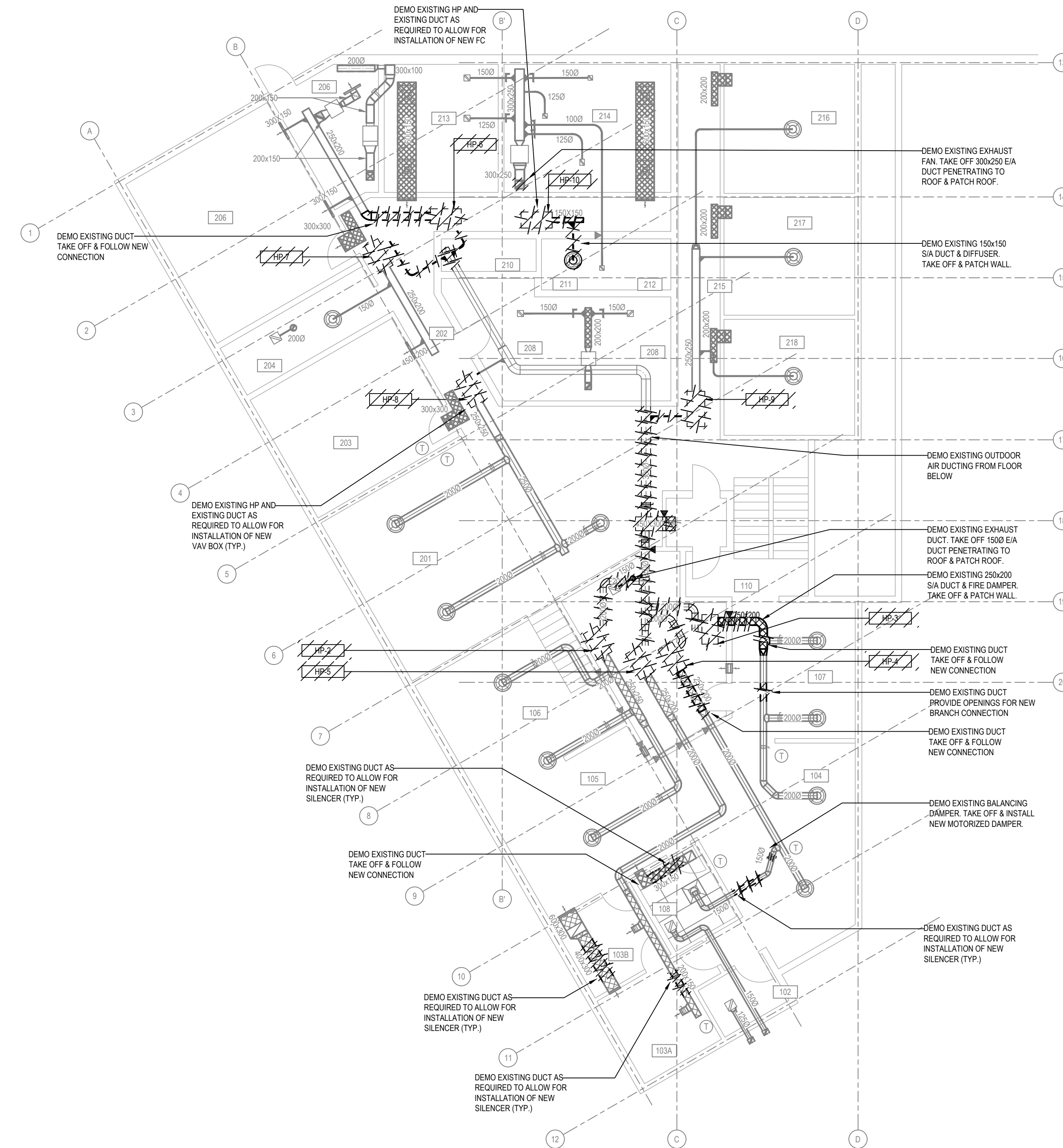
DRAWN BY: KLBN
DESIGNED BY: KL
APPROVED BY: AM
SCALE: 1:100

DRAWING:

M-1



1 MAIN AND SECOND FLOOR PLAN
1:100



2 MAIN AND SECOND FLOOR PLAN
1:100

SUB-CONSULTANT:

KEYPLAN:

2	24APR2026	ISSUED FOR TENDER	KL
1	29AUG2025	90% COORDINATION	KL
No.	DATE	DESCRIPTION	BY
REVISIONS:			

Mechanical drawings must be read with mechanical specifications. Drawing plot size is 36"x24". Drawings are to be read for the purpose identified in the revision/issue column. Drawings are not for pricing or construction unless specified. These documents are intellectual property of Rocky Point Engineering Ltd. and are for the project in the title block only. Reproduction in any form requires Rocky Point Engineering Ltd.'s express consent.

SEAL:

Permit to Practice #1000700

CLIENT:



LADYSMITH

PROJECT:
LADYSMITH RCMP - HVAC UPGRADES

320 6TH AVENUE
LADYSMITH, BC

DRAWING NAME:

LADYSMITH RCMP - NEW

PROJECT NUMBER:

25353-N

DRAWN BY: KLBN

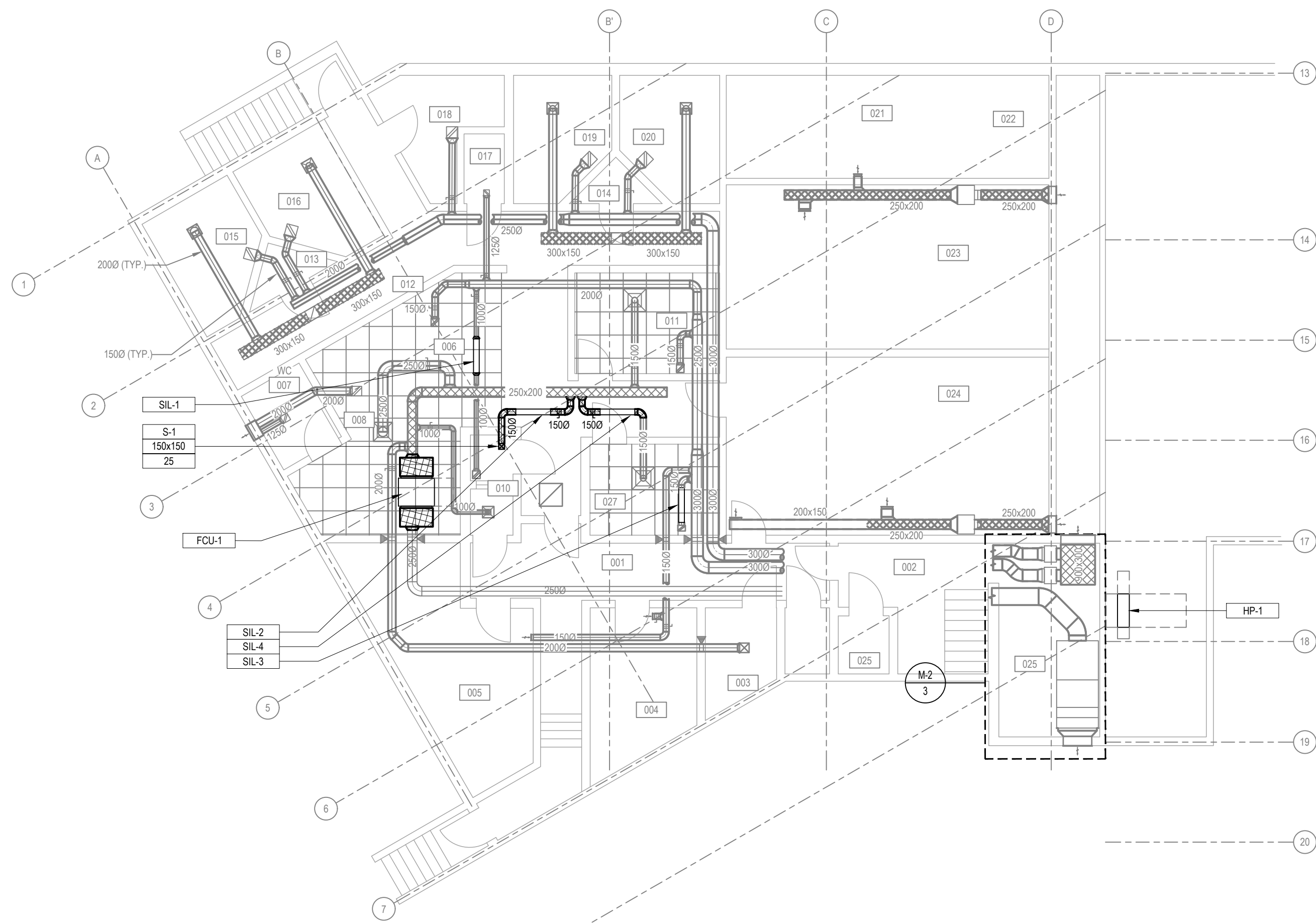
DESIGNED BY: KL

APPROVED BY: AM

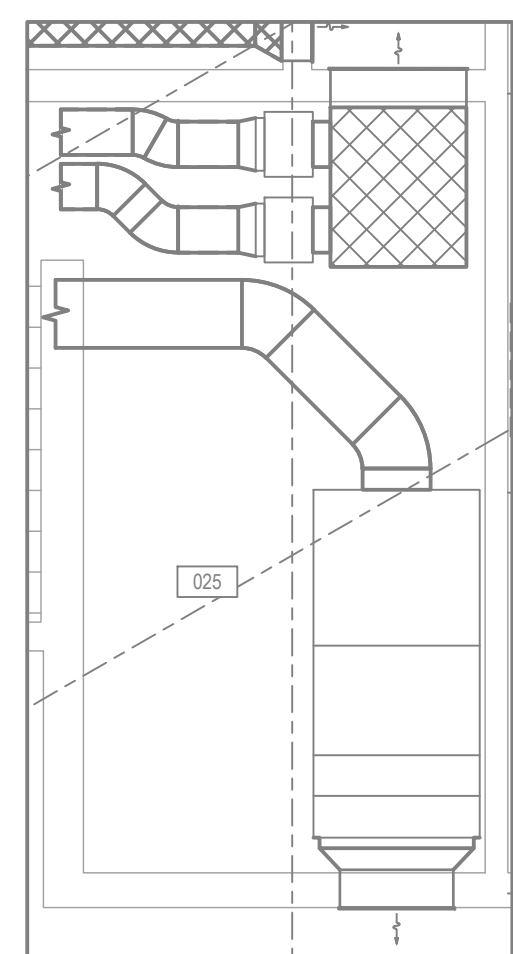
SCALE: 1:100

DRAWING:

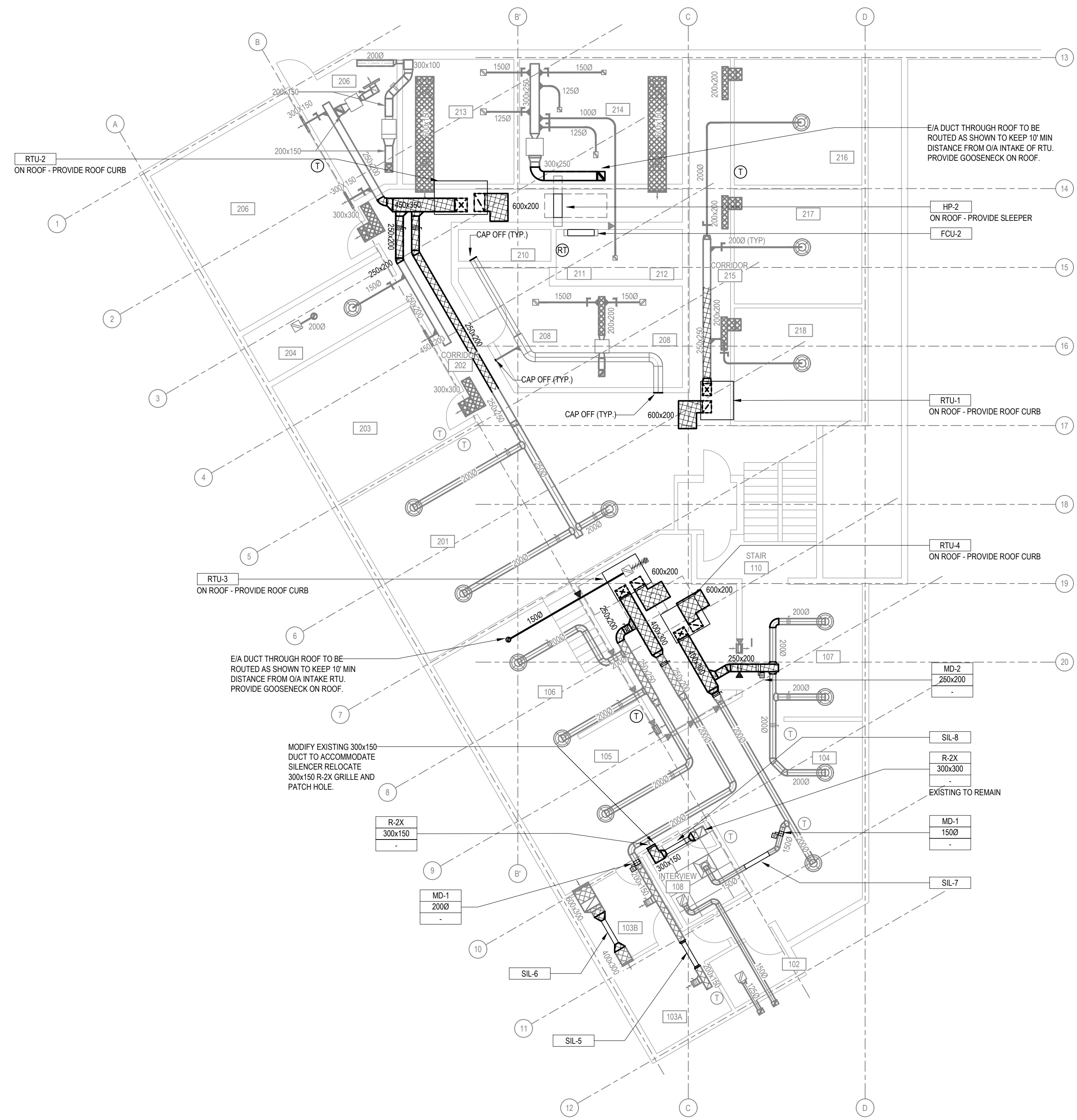
M-2



1 BASEMENT PLAN
M2 1:100



3 MECH ROOM CALLOUT
M2 1:50



2 MAIN AND SECOND FLOOR PLAN
M2 1:100

HVAC SYMBOL SCHEDULE

[Symbol]	SUPPLY DUCT
[Symbol]	RETURN DUCT
[Symbol]	EXHAUST DUCT
[Symbol]	MITERED DUCT ELBOW W/ VANES
[Symbol]	ANGLED DUCT ELBOW W/ VANES
[Symbol]	DUCT ELBOW 1R
[Symbol]	DUCT ELBOW 1.5R
[Symbol]	DUCT WITH EXTERNAL INSULATION
[Symbol]	DUCT TRANSITION
[Symbol]	DUCT TAKEOFF
[Symbol]	RETURN GRILLE
[Symbol]	EXHAUST GRILLE
[Symbol]	SUPPLY AIR DIFFUSER SQUARE
[Symbol]	WALL GRILLE (OUTIN)
[Symbol]	CIRCULAR DUCT BREAK
[Symbol]	RECTANGULAR DUCT BREAK
[Symbol]	FLOW DIRECTION ARROW
[Symbol]	BALANCE DAMPER
[Symbol]	DOOR UNDERCUT
[Symbol]	THERMOSTAT

- GENERAL NOTES:**
- CONTRACTOR SHALL CONFIRM PIPE LOCATIONS AND SIZES PRIOR TO DEMOLITION WORK.
 - PATCH AND MAKE GOOD ANY WALL/ROOF/FLOOR OPENINGS AS A RESULT OF DELETED/REMOVED EXISTING DUCTWORK/MECHANICAL/ELECTRICAL EQUIPMENT. FINISH PAINT ANY EXPOSED SURFACES AS A RESULT OF DELETED DUCTWORK/MECHANICAL/ELECTRICAL EQUIPMENT TO MATCH EXISTING.
 - REMOVE ANY REDUNDANT PIPING THAT OBSTRUCTS THE INSTALLATION OF NEW MECHANICAL SYSTEMS, UNLESS OTHERWISE INDICATED.
 - CONTRACTOR SHALL ALLOW FOR ANY DUCTWORK/PIPPING OFFSETS REQUIRED TO AVOID EXISTING CONDITIONS (STRUCTURAL/MECHANICAL/ELECTRICAL) ENCOUNTERED ON SITE.
 - CONTRACTOR TO INSTALL EQUIPMENT SUCH THAT ACCESS REQUIREMENTS TO ALL INTERNAL AND EXTERNAL COMPONENTS ARE MAINTAINED AS PER SERVICING REQUIREMENTS.

HEAT PUMP SCHEDULE

TAG	MANUFACTURER	MODEL	SERVICE	LOCATION	NOMINAL SIZE (TONS)	NOMINAL COOLING (MBH)	NOMINAL HEATING (MBH)	EFFICIENCY SEER	SOUND LEVEL (dBA)	VOLTAGE (V/PHASE)	ELECT. MOCP	ELECT. MCA	DIMENSIONS (WxHxD)	WEIGHT (KG)	REMARKS
HP-1	SAMSUNG	AC018BXADCHAA	FCU-1	EXTERIOR CONCRETE PAD	2	18	20	19.6	48	208/160	25	20.1	800x800x310	57	1.2
HP-2	SAMSUNG	AR050XDABWNCV	FCU-2	EXTERIOR CONCRETE PAD	1	9	11	25	45	208/160	20	12	780x500x285	31	1.2

REMARKS:
1. GALVANIZED Z20A CASE, Z20A PERFORATED LINER, FIBERGLASS INTERIOR.
2. INTERFACIAL AS, LEAK DETECTION TO ENABLE FAN AND ALARM.

MOTORIZED DAMPER SCHEDULE

TAG	MANUFACTURER	MODEL	DIMENSION	VOLTAGE	MOUNTING	REMARKS
MD-1	GREENHECK	VCDR-30	SEE DWG	120 V	DUCT	1
MD-2	GREENHECK	VCD-33	SEE DWG	120 V	DUCT	1

REMARKS: 1. STANDARD ELECTRIC ACTUATOR

GRILLE & DIFFUSER SCHEDULE

TAG	MANUFACTURER	MODEL	SERVICE	MOUNTING	REMARKS
S-1	EH PRICE	MSPG	SUPPLY	CEILING	STANDARD STEEL, STANDARD WHITE - B12

NOTE: EXISTING GRILLES AND DIFFUSERS TO REMAIN

FANCOIL SCHEDULE

TAG	MANUFACTURER	MODEL	SERVICE	TYPE	LOCATION	NOMINAL COOLING CAP (MBH)	NOMINAL HEATING CAP (MBH)	VOLTAGE (V/PHASE)	AR FLOW (L/S)	PIPPING CONNECTION (LIQUID IN/RETURN) (SUCTION IN/RETURN) (DRAIN IN/RETURN)	SOUND LEVEL (DB)	MOTOR (WATTS)	MCA	MOP	ESP (FTWC)	DIMENSIONS (WxHxD)	WEIGHT (KG)	REMARKS	
FCU-1	SAMSUNG	AC018BXADCHAA	LOWER FLOOR	SUM DUCT	LOWER FLOOR	18	20	208/160	292	6	13	25	26/30/34	153	-	0.8	1200x250x700	35	1
FCU-2	SAMSUNG	AR050XDABWNCV	ELECTRICAL CLOSET	DUCTLESS	UPPER FLOOR	9	11	208/160	201	6	10	17	22/28	27	-	-	890x300x215	10	

REMARKS:
1. R410A REFRIGERANT. PERFORMANCE CONDITIONS: COOLING, 80°F DB/67°F WB INDOOR, 95°F DB/75°F WB OUTDOOR. HEATING, 68°F DB/59°F WB INDOOR, 44.8°F DB/42.8°F WB OUTDOOR.
2. INTERFACIAL AS, LEAK DETECTION TO ENABLE FAN AND ALARM.
3. INCLUDE STANDARD FILTERS, VIBRATION ISOLATORS, 347 PROGRAMMABLE WIRED REMOTE THERMOSTAT.
4. GALVANIZED Z20A CASE, Z20A PERFORATED LINER, FIBERGLASS INTERIOR.

SILENCER SCHEDULE

TAG	MANUFACTURER	MODEL	SERVICE	LOCATION	DIMENSIONS (WxHxL)	AIR FLOW (L/S)	DYNAMIC INSERTION LOSS (dB)						REMARKS		
							63	125	250	500	1000	2000		4000	8000
SIL-1	EH PRICE	CS	EXHAUST	SEE PLANS	1500x150	20	4	6	18	27	33	20	15	14	1
SIL-2	EH PRICE	CS	SUPPLY	SEE PLANS	1500x150	25	3	5	15	24	29	20	15	14	1
SIL-3	EH PRICE	CS	EXHAUST	SEE PLANS	1500x150	50	4	6	18	27	33	20	15	14	1
SIL-4	EH PRICE	CS	SUPPLY	SEE PLANS	1500x150	50	3	5	15	24	29	20	15	14	1
SIL-5	EH PRICE	CS	SUPPLY	SEE PLANS	1500x150	70	3	5	15	24	29	20	15	14	1
SIL-6	EH PRICE	CS	TRANSFER	SEE PLANS	1500x150	70	4	6	18	27	33	20	15	14	1
SIL-7	EH PRICE	CS	SUPPLY	SEE PLANS	1500x150	50	3	5	15	24	29	20	15	14	1
SIL-8	EH PRICE	CS	TRANSFER	SEE PLANS	1500x150	50	4	6	18	27	33	20	15	14	1

REMARKS:
1. GALVANIZED Z20A CASE, Z20A PERFORATED LINER, FIBERGLASS INTERIOR

ROOF TOP UNIT SCHEDULE

TAG	MANUFACTURER	MODEL	SERVICE	LOCATION	REFRIGERANT TYPE	HEATING SECTION ELECTRIC BACKUP			HEATING SECTION HEAT PUMP			COOLING SECTION			ELECTRICAL PERFORMANCE			AIRFLOW (L/S)	STATIC PRESSURE	REMARKS				
						INPUT (KW)	EAT (F)	LAT (F)	INPUT (MBH)	EAT (F)	LAT (F)	COP (47/17)	CAPACITY	SENSIBLE (MBH)	EAT (F)	LAT (F)	WATTS				MCA	MOP	V @ 1/1Hz	
RTU-1	TRANE	IMPACX024	ZONE 1	ROOF	R-454B	5	70	84.8	9.14	60	-	7.2	2 TONS	-	-	-	2325	1925	208/100	378	-	0.5"WC	1	
RTU-2	TRANE	PRECEDENT048	ZONE 2	ROOF	R-454B	12	70	83.4	24.26	60	76.41	3.522	4 TONS	40.83	80	56.63	57.66	6370	5900	208/100	755	-	0.88"WC	1
RTU-3	TRANE	IMPACX030	ZONE 3	ROOF	R-454B	5	70	81.8	10.84	60	-	7.2	2.5 TONS	-	-	-	3325	2335	208/100	472	-	0.5"WC	1	
RTU-4	TRANE	IMPACX024	ZONE 4	ROOF	R-454B	5	70	84.8	9.14	60	-	7.2	2 TONS	-	-	-	3325	1925	208/100	378	-	0.5"WC	1	

REMARKS:
1. GALVANIZED Z20A CASE, Z20A PERFORATED LINER, FIBERGLASS INTERIOR.
2. INTERFACE WITH DDC SCHEDULING TEMP LIMITS AND MONITORING.
3. PROVIDE ROOF CURB

