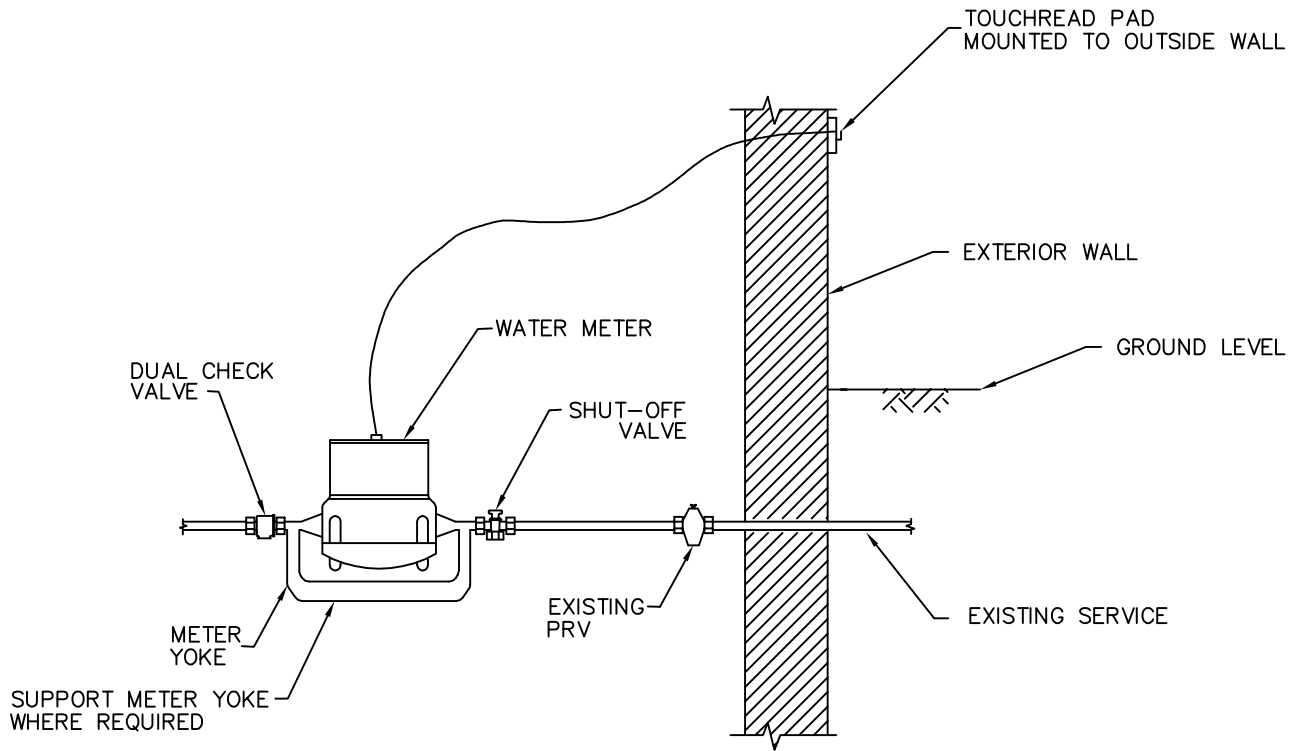


INSIDE

OUTSIDE



**MATERIALS:**

- DUAL CHECK VALVE - 19mm MUELLER ORISEAL OR APPROVED EQUIVALENT.
- WATER METER - SENSUS SR11 16mm X 19mm POSITIVE DISPLACEMENT OR APPROVED EQUIVALENT. UNIT OF MEASUREMENT IN CUBIC METRES AND C/W 6 DIGIT (3 BOARD) REGISTRATION.
- METER YOKE - MUELLER CAST IRON OR COPPER FOR 16 X 19mm METER OR APPROVED EQUIVALENT.
- SHUT-OFF VALVE - 19mm MUELLER ORISEAL OR APPROVED EQUIVALENT.

**NOTES:**

1. DUAL CHECK VALVE TO BE INSTALLED DOWN STREAM OF WATER METER.
2. SHUT-OFF VALVE TO BE INSTALLED UP STREAM OF METER. WHERE POSSIBLE USE EXISTING SHUT-OFF (RELOCATE IF REQUIRED).
3. BRACING/SUPPORTING OF THE METER YOKE IS THE RESPONSIBILITY OF THE CONTRACTOR.
4. NO CONNECTIONS TO THE RESIDENTIAL SERVICE UPSTREAM OF THE METER SHALL BE PERMITTED.
5. THIS DRAWING REPRESENTS A "TYPICAL" INSTALLATION. THE CONTRACTOR SHALL BE RESPONSIBLE FOR NON-TYPICAL INSTALLATIONS UNLESS EXCEPTIONS ARE AUTHORIZED BY THE TOWN PRIOR TO INSTALLATION.
6. METERS MUST BE CAPABLE OF OPERATING IN THE VERTICAL POSITION AND MUST BE FULLY WARRANTIED IN THIS APPLICATION.

DIMENSIONS ARE IN MILLIMETRES UNLESS OTHERWISE NOTED



**TOWN OF LADYSMITH**  
ENGINEERING STANDARD

**TYPICAL**  
**SINGLE FAMILY RESIDENTIAL**  
**IN HOUSE WATER**  
**METER INSTALLATION**

DATE: AUGUST 1996

APP. BY:

DRAWING No.  
**W1A**

REV.  
**00**