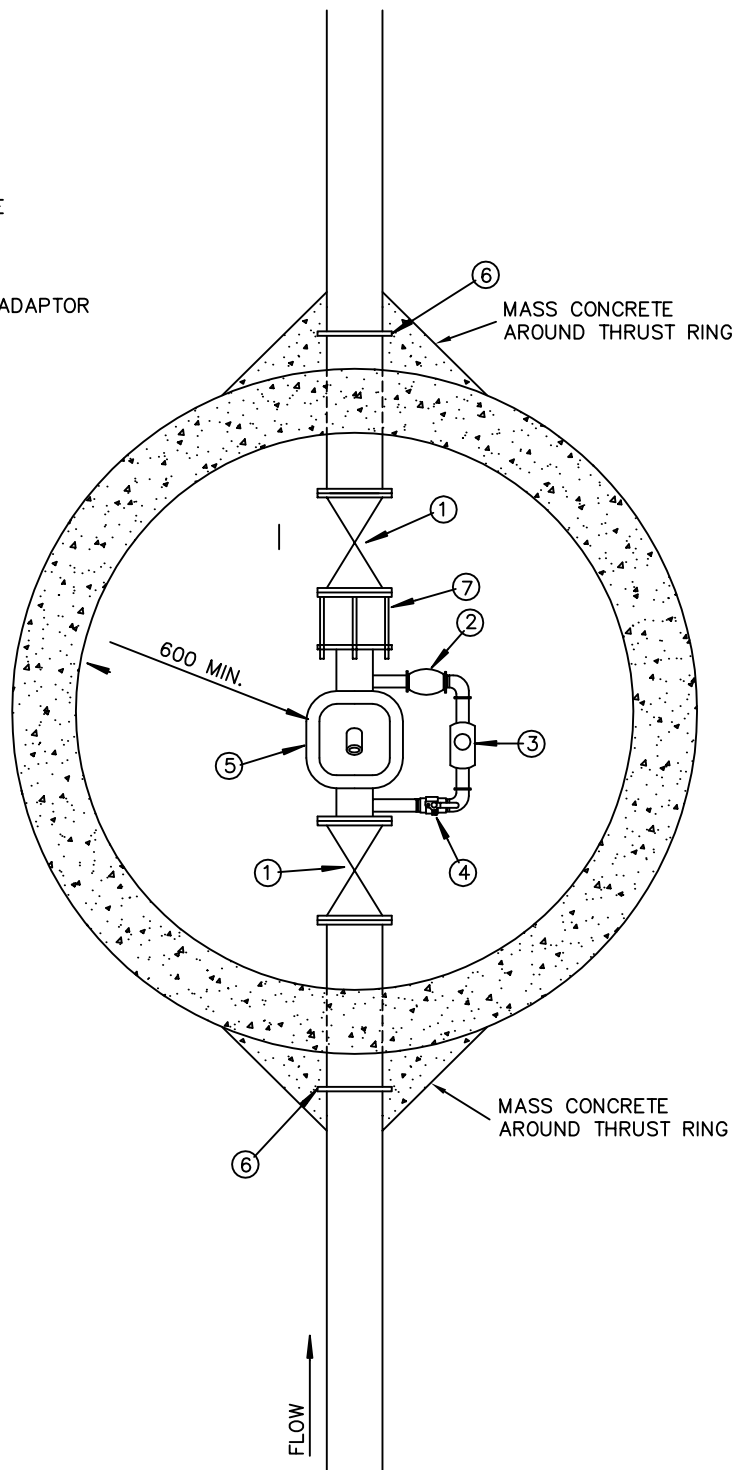


MATERIAL LIST

- ① GATE VALVE
- ② CHECK VALVE
- ③ BY-PASS METER
- ④ LOCKING BALL VALVE
- ⑤ DETECTOR CHECK
- ⑥ THRUST RING
- ⑦ FLANGED COUPLING ADAPTOR



SEE DRAWING W13
FOR METER CHAMBER
DETAILS

NOTES:

1. ONLY PRODUCTS APPROVED BY THE TOWN ENGINEER WILL BE ACCEPTED FOR INSTALLATION ONLY UL LISTED PRODUCTS SHALL BE APPROVED FOR FIRE LINE SERVICE
2. METER ASSEMBLY TO BE SUPPORTED BY STEEL PIPE SUPPORTS AS REQUIRED
3. THRUST BLOCKING TO BE INSTALLED AS REQUIRED
4. MAIN LINE BY PASS TO BE INSTALLED WHEN REQUIRED BY THE ENGINEER

DIMENSIONS ARE IN MILLIMETRES UNLESS OTHERWISE NOTED



TOWN OF LADYSMITH
ENGINEERING STANDARD

FIRE LINE SERVICE
PIPING LAYOUT

DATE: FEB. 1994

APP. BY:

DRAWING No.
W17

REV.
00