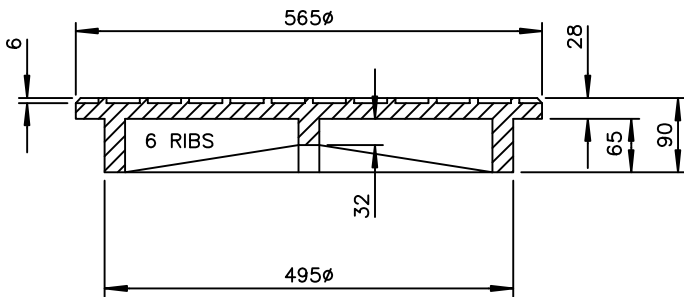


REFERING TO "TOWN OF LADYSMITH STORM DRAIN" LETTERING SHALL BE 25 FLATTENED FACE GOTHIC WITH FACE OF LETTERS RAISED TO THE SAME LEVELS AS THE TOP OF THE RIBS

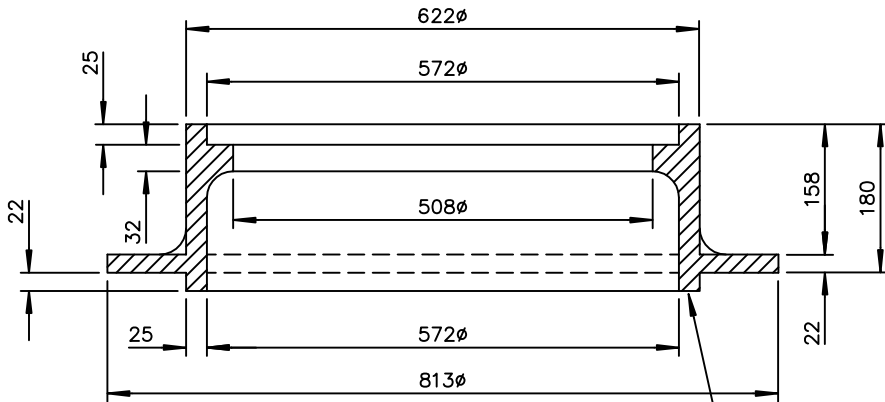
MANUFACTURES SYMBOL 90 MAXIMUM DIMENSION, CIRCLE OR SQUARE

21 ϕ HOLE
TWO REQUIRED AS SHOWN

PLAN



COVER



FRAME

FRAMES INSTALLED ON 600 ϕ BARRELS SHALL NOT HAVE RIB

NOTES:

1. ALL CASTINGS SHALL BE CERTIFIED TO MEET CS600 REQUIREMENTS
2. ALL METAL BEARING SURFACES BETWEEN FRAME, COVER AND RISER RINGS MACHINED FOR NON ROCKING FIT IN ALL POSITIONS. ALLOW 1.5 RAISED FACE IN CASTING FOR MACHINING
3. ONLY PRODUCTS APPROVED BY THE TOWN ENGINEER WILL BE ACCEPTED FOR INSTALLATION

DIMENSIONS ARE IN MILLIMETRES UNLESS OTHERWISE NOTED



TOWN OF LADYSMITH
ENGINEERING STANDARD

HEAVY DUTY MANHOLE
COVER AND FRAME

DATE: MAY 2002

APP. BY:

DRAWING No.

D4

REV.

00