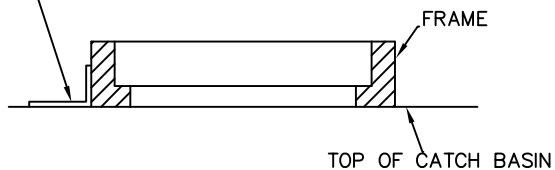


PLAN

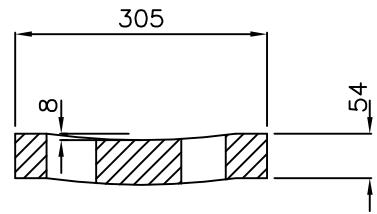
INSTALL 6 x 75 x 50 x 750
LONG IRON BRACKET CONCRETE
IN PLACE.



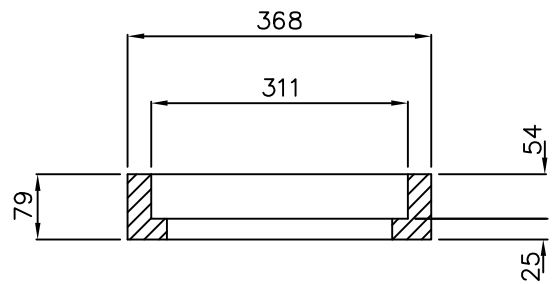
INSTALLATION DETAIL

NOTES:

1. ALL CASTING SHALL BE CERTIFIED TO MEET CS600 LOADING REQUIREMENTS
2. APPROXIMATE WEIGHT OF CASTINGS
 FRAME = 59 kg
 GRATE = 61 kg
3. ONLY PRODUCTS APPROVED BY THE ENGINEER
 WILL BE ACCEPTED FOR INSTALLATION
4. LEFT OR RIGHT HAND GRATINGS TO BE
 USED AS APPROPRIATE TO FACE CURB

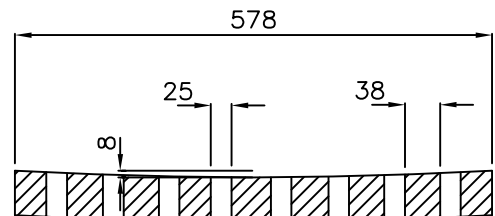


GRATE

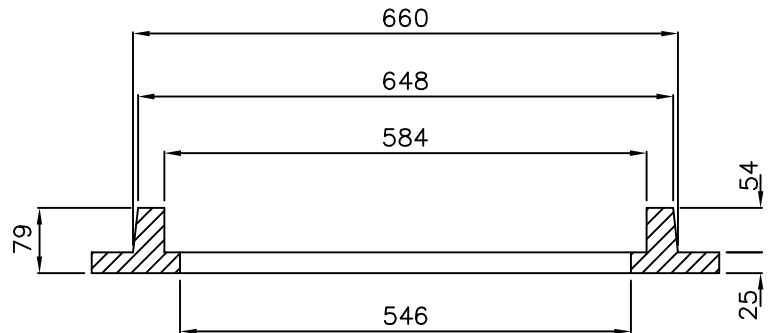


FRAME

SECTION A-A



GRATE



FRAME

SECTION B-B

DIMENSIONS ARE IN MILLIMETRES UNLESS OTHERWISE NOTED



TOWN OF LADYSMITH
ENGINEERING STANDARD

CATCH BASIN FRAME AND GRATE
TYPE 2

DATE: JAN. 1999

APP. BY:

DRAWING No.
D12A

REV.
00