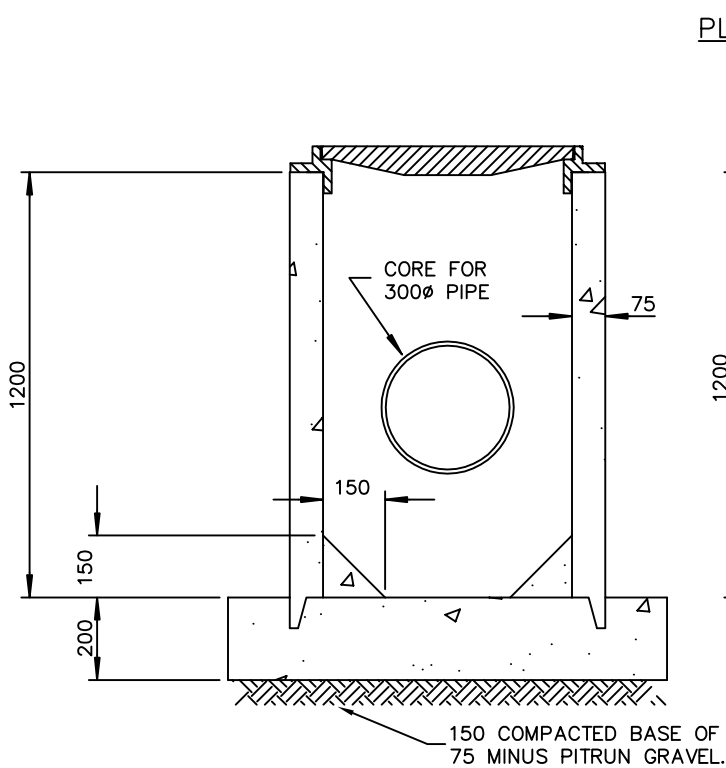
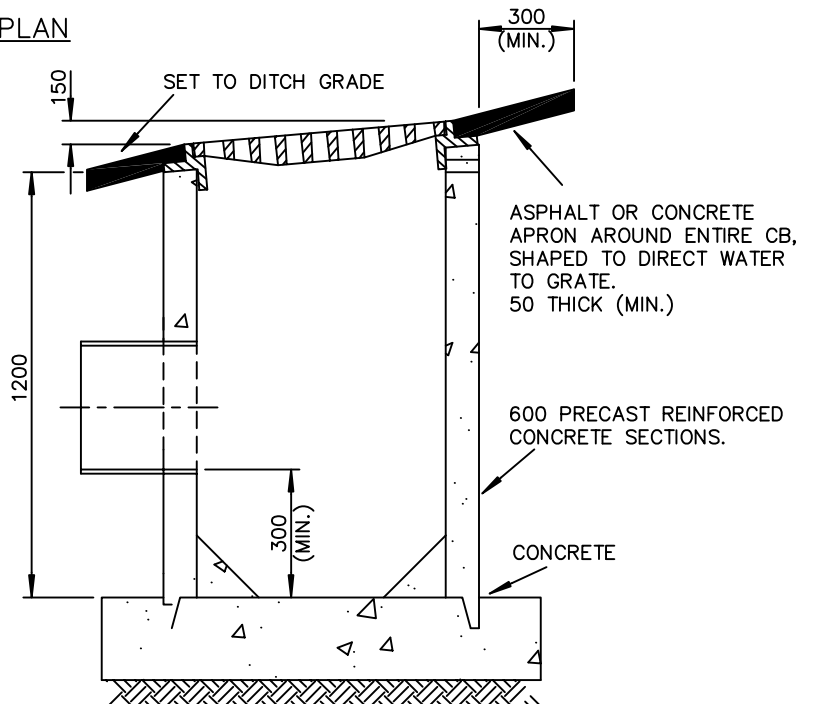


PLAN



SECTION A-A



SECTION B-B

NOTES:

1. THIS DITCH INLET TO BE USED FOR CONNECTIONS TO STORM SEWERS
2. FOR DITCHES WITH GRADES LESS THAN 5%, GRATE TO BE SET LEVEL. FOR DITCHES WITH GRADES OVER 5%, GRATE TO BE SET RAISED ON DOWNSTREAM SIDE AS SHOWN
3. ALL JOINTS TO BE PRE-WETTED BEFORE MORTAR IS PLACED
4. FOR FRAME AND GRATE DETAILS SEE STD. DWG. D14A
5. GRANULAR BASE MATERIAL TO BE COMPACTED TO 95% MODIFIED PROCTOR DENSITY
6. MORTAR SHALL COMPLY TO A.S.T.M. C-270-68 OR LATEST REVISION
7. ONLY PRODUCTS APPROVED BY THE ENGINEER WILL BE ACCEPTED FOR INSTALLATION

DIMENSIONS ARE IN MILLIMETRES UNLESS OTHERWISE NOTED



TOWN OF LADYSMITH  
ENGINEERING STANDARD

DITCH INLET CATCH BASIN  
TYPE 4

DATE: FEB. 1994

APP. BY:

DRAWING No.  
D14

REV.  
00