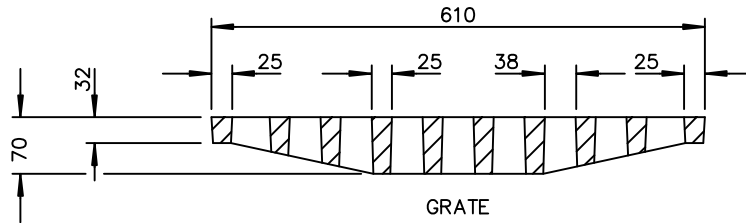
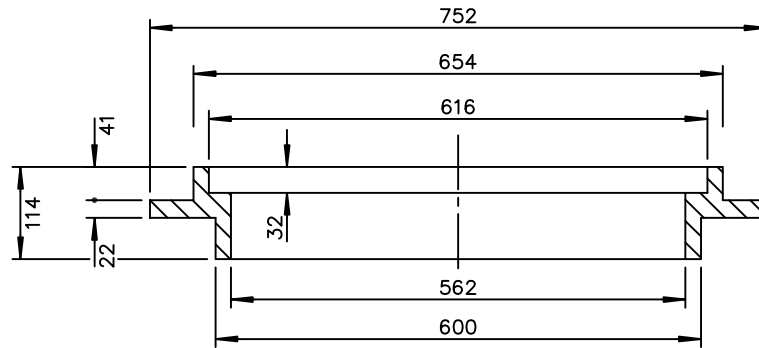


PLAN



GRATE



FRAME

SECTION A-A

NOTES:

1. ALL METAL BEARING SURFACES BETWEEN FRAME, COVER AND RISER RINGS SHALL BE MACHINED FOR A NON-ROCKING FIT IN ALL POSITIONS. ALLOW 1.5mm RAISED FACE IN CASTING FOR MACHINING.
2. APPROXIMATE WEIGHT OF CASTINGS  
 FRAME = 63 kg  
 GRATE = 42 kg
3. ONLY PRODUCTS APPROVED BY THE ENGINEER WILL BE ACCEPTED FOR INSTALLATION

DIMENSIONS ARE IN MILLIMETRES UNLESS OTHERWISE NOTED



TOWN OF LADYSMITH  
 ENGINEERING STANDARD

FRAME AND GRATE FOR DITCH  
 INLET CATCH BASIN. TYPE 4

DATE: FEB. 1994

APP. BY:

DRAWING No.  
 D14A

REV.  
 00