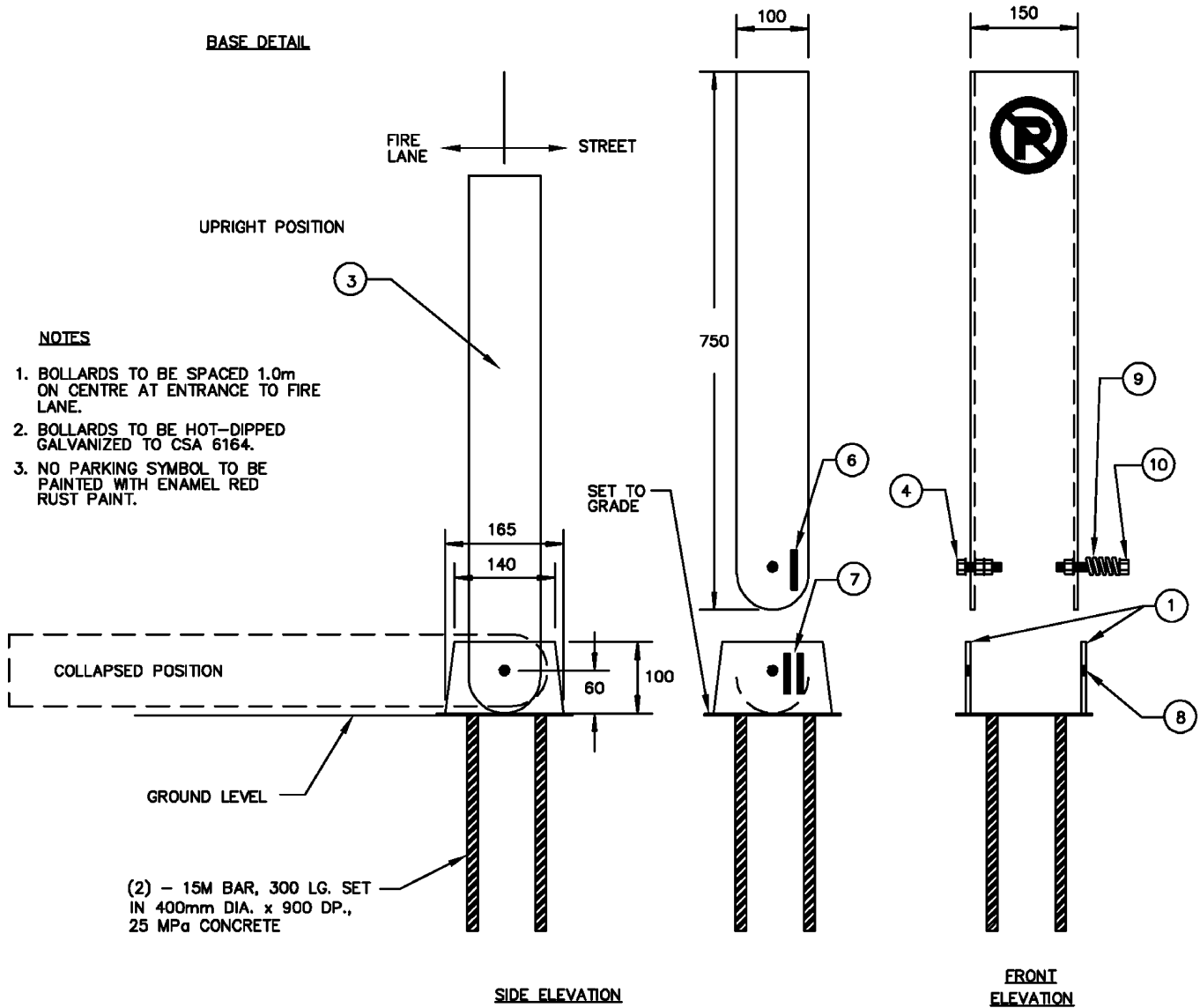


- ① 6mm STEEL PLATE WELDED TO BASE PLATE
- ② 190x190x6 STEEL ANCHOR
- ③ 100x150x6 STEEL TUBE BOLLARD c/w TOP PLATE
- ④ 1/2"x2" BOLT & WASHER
- ⑤ LOCK NUT WELDED TO BOLLARD
- ⑥ WELDED BEAD
- ⑦ TWO WELDED BEADS TO LOCK WELDED
- ⑧ 15 DIA. HOLE
- ⑨ 1-1/2" LONG SPRING, 1" DIA., 5 COILS, 3/16" DIA.
- ⑩ 1/2" X 3-1/2" BOLT c/w 2 WASHERS

BASE DETAIL



**NOTES**

- 1. BOLLARDS TO BE SPACED 1.0m ON CENTRE AT ENTRANCE TO FIRE LANE.
- 2. BOLLARDS TO BE HOT-DIPPED GALVANIZED TO CSA 6164.
- 3. NO PARKING SYMBOL TO BE PAINTED WITH ENAMEL RED RUST PAINT.

(2) - 15M BAR, 300 LG. SET IN 400mm DIA. x 900 DP., 25 MPa CONCRETE

DIMENSIONS ARE IN MILLIMETRES UNLESS OTHERWISE NOTED



TOWN OF LADYSMITH  
ENGINEERING STANDARD

FIRE LANE  
COLLAPSIBLE BOLLARD

DATE: JAN. 2005

APP. BY:

DRAWING No.  
C12

REV.  
01